

heartland LINK

A publication of East-Central Iowa Rural Electric Cooperative

ANNUAL MEETING DETAILS

pages 4-5

Schedule, guest speaker, Director candidates.

MOMENTUM IS BUILDING

page 6

Conference for area contractors focuses on energy-efficient building.



MAY IS NATIONAL ELECTRICAL SAFETY MONTH

pages 8-9

Are you following these safety tips for your home?

OPERATIONS CENTER

page 10

Progress photos from Independence.



Advocating for Our Members

Story on page 3

Photo by LAEC

 **ECI REC**
Energy Wise, Community Connected

A Touchstone Energy® Cooperative 

03 LIGHTNING STRIKE SAFETY**04 ANNUAL MEETING DETAILS**

Schedule, 2016 highlights,
Director candidates

06 MOMENTUM IS BUILDING

Conference for area contractors

06 STEPPING UP SOLAR

CIPCO's solar project by the
numbers

07 YOUTH TOUR WINNERS**07 SCHOLARSHIP WINNERS****08 AIR-SOURCE HEAT PUMPS**

A good choice for Iowa weather

**08 MAY IS NATIONAL
ELECTRICAL SAFETY MONTH****09 ECI REC OUTAGE MAP**

Real-time updates during outages

09 OUTAGE STEPS

What to do when the lights go out

10 OPERATIONS CENTER

Progress photos from Independence

10 CO-OP CONNECTIONS®

Local businesses offer discounts

10 FINANCIALS RELEASED

Annual audit completed

11 COOPERATIVE TEAM

Manager and Director honored

our members say thank you

“Everyone is quick to address outages and issues related to weather, etc. We want you to know it's much appreciated, especially when you're out in crummy weather. Thank you!” **RICK AND MARLY LASSEN**

take the member challenge

1. THE COOPERATIVE DIFFERENCE: The 2016 budget included approximately \$2.6 million in _____ improvements and \$2.5 million for a new operating facility in Independence.

2. ENERGY WISE: However, a new ____-____ heat pump replacing a vintage unit will use much less energy, cutting air conditioning costs substantially.

3. SAFETY: Dirt buildup on your _____ coils can reduce efficiency and create fire hazards; vacuum them several times a year.

Find the answers within the stories, features, and content of this newsletter and you could win a prize. Send your answers to memberchallenge@ecirec.coop. Or, print the word(s) at the top of the back page, cut it out, and send it to: ECI REC, PO Box 248, Urbana, IA 52345. You may mail your entry along with your electric bill payment, but remember there is a deadline! Entries for this issue must be received by June 1. Sixteen names will be drawn from all correct entries. Members will not be allowed to win more than once per calendar year.

last issue's challenge winners

The following names were drawn from the March/April 2017 *Heartland Link* entries. These members will receive a \$10 credit on their account.

Tony Clark

Jim Estes

Michael & Roxine Hild

Sharon Kokinos

Marvin Lincoln

James & Lois Loughren

Dale & Margaret Maddigan

Gary & Nancy Maurer

James Miller

Erik & Leslie Moen

David & Tara Mohlis

Dale Seeck

Bernice Smolik

David Streif

Arnold Suhr

Barbara Wittmer

Calendar Notes

May 29 - Closed
for Memorial Day

June 15 - Annual
Meeting

Contact ECI REC

EMAILS

memberservices@ecirec.coop
(rebates, product sales)

csr@ecirec.coop
(billing, new customers)

WEBSITE

www.ecirec.coop

MANAGEMENT TEAM

Steve Marlow
Chief Executive Officer
Ext. 421
steve.marlow@ecirec.coop

Teresa Floyd
Manager of Finance
and Consumer Service
Ext. 450
teresa.floyd@ecirec.coop

Gary Marlow
Operations Manager
Ext. 413
gary.marlow@ecirec.coop

Adam Albertsen
Director of Member
Service
Ext. 503
adam.albertsen@ecirec.coop

Lisa Franck
Manager of
Communications
Ext. 472
lisa.franck@ecirec.coop

Nathan Groom
Information System
Administrator
Ext. 410
nathan.groom@ecirec.coop

ADDRESS

2400 Bing Miller Lane
PO Box 248
Urbana, IA
52345-0248

PHONE

319-443-4343

TOLL FREE

877-850-4343

FAX 319-443-4359

HOURS

Monday-Friday
Office: 8:00 a.m. to
4:30 p.m.

(closed Saturdays,
Sundays, and holidays)



OPERATIONS NEWS
OUTAGE UPDATES

[facebook.com/
eastcentraliowarec](https://facebook.com/eastcentraliowarec)

08 MONEY SMART TIP**11 BOARD OF DIRECTORS****11 CLASSIFIEDS****12 CEO MESSAGE**



photo by LAEC

Above: (L to R) Board Secretary/Treasurer Jim Alberts, Board Director Chris Sackett, ECI REC CEO Steve Marlow, and Directors Gary McKenna, Burt Byers, Jim Barz, Don Shonka, and Jeff Elliott in Des Moines on February 14 at ECI REC's Day on the Hill. ECI REC representatives spoke with many legislators, including Senator Craig Johnson, shown with Marlow on the cover. ECI REC's Day on the Hill leads up to the statewide REC Day on the Hill that all Iowa electric cooperatives are invited to attend.

Advocating for Our Members

Iowa Capitol a Center of Activity During REC Day on the Hill


a Looking Out For You feature

MORE THAN 200 COOPERATIVE SUPPORTERS, including representatives from East-Central Iowa REC, traveled to Des Moines on Wednesday, March 22, to advocate on behalf of Iowa's not-for-profit electric cooperatives.

It was a day full of government activity, starting with the reading and passage of House Resolution 14 on the House floor, which commemorated the important role of Iowa's electric cooperatives as it pertains to economic development and improving the quality of life for rural Iowans. Later that morning, cooperative representatives were present as Governor Branstad signed SF 331 into law, which streamlines energy efficiency reporting for electric co-op staff, allowing them more time to serve member-consumers. The bill passed unanimously in the Iowa House and Senate.

Co-op representatives then convened for a briefing where they received updates on state and federal

legislative issues. In the afternoon, co-op representatives met with their local elected officials during a dessert social held at the Capitol rotunda. The advocates educated legislators on several issues important to Iowa's electric cooperatives, including the safety of line personnel as they work on the side of roadways in accordance with the state's "Move Over or Slow Down" law and the expansion of property tax exemptions for geothermal heating and cooling systems.

"This annual visit to the Iowa Capitol is an excellent opportunity to personally meet with our elected officials and provide them with a local co-op perspective on issues that are important to our business," said CEO Steve Marlow, who attended the event. Other ECI REC representatives in attendance were Board President Steve Rau, Secretary/Treasurer Jim Alberts, and Directors Burt Byers, Jim Barz, Don Shonka, and Jeff Elliott. 

70% of
lightning fatalities
occur June through August

- National Weather Service



There is no safe place from lightning when you are outside. If you hear thunder, lightning is close enough to pose an immediate threat. That is why the National Weather Service advises, "When Thunder Roars, Go Indoors!" Lightning can strike up to 10 miles away from rain, even if you don't see clouds.

Learn more at

 **Safe
Electricity.org**

Every 6 minutes

an underground utility line is damaged
because someone decided to dig
without first calling 811.



IOWA ONE CALL
It's fast. It's free. It's the law.



**STEVE RAU,
PRESIDENT**



**STEVE MARLOW,
CEO**

2016 Highlights to Be Celebrated at the Annual Meeting

Delivering Value for a Brighter Tomorrow
TRUST – COMMUNITY – JOBS – LOCAL

a Cooperative Difference article



AT EAST-CENTRAL IOWA REC, we're in the middle of a three-year string of anniversaries. 2016 marked the twentieth year of East-Central Iowa REC as we know it today. Born from Benton County Electric Cooperative Association and Buchanan County Rural Electric Cooperative, ECI REC held its first Annual Meeting of the Members in 1996. These parent Cooperatives would have celebrated their 80th anniversaries in 2017 and 2018.

The dedication and tenacity of rural Iowans who fought to bring affordable power to the countryside still inspire us today, and the same values remain. We are focused on earning members' **trust**, giving back to our **communities**, supporting regional **jobs**, and providing a reliable, **local** service. When we achieve these goals, ECI REC delivers value for a brighter tomorrow.

THE COOPERATIVE DIFFERENCE

The 2016 budget included approximately \$2.6 million in system improvements and \$2.5 million for a new operating facility in Independence. These system upgrades were part of our 2013-2016 Construction Work Plan. The budget also included \$2.3 million in preventative and ongoing line maintenance programs, including pole testing and meter testing, tree trimming, transformer and breaker maintenance, and more.

ECI REC Directors Jim Alberts, Jeff Elliott, Steve Rau, and Don Shonka received Director Gold by earning NRECA's Credentialed Cooperative Director Certificate (CCD) and Board Leadership Certificate (BLC), plus three additional credits from BLC courses.

At the May Board meeting, the Board of Directors approved the retirement of \$510,315 of its 1999, 2000, and 2001 margins to Cooperative members.

ENERGY WISE

Frontier Co-op of Norway, an ECI REC commercial member, upgraded warehouse and production area lighting, including 117 high-bay fixtures, 32 outdoor fixtures, and 2,486 four-foot LED lamps. Frontier Co-op received \$30,492 in rebates for this project and is saving an average of 46% on lighting costs.

On October 14, power began flowing from Urbana Solar Acres, a utility-scale solar project at Becca Industrial Park in Urbana. It was the first of CIPCO's five planned utility-owned solar projects to be

energized. Urbana Solar Acres is powered by 3,708 solar panels and will generate enough electricity for 139 homes. Members throughout the ECI REC service territory are now receiving the clean, reliable electricity provided by Urbana Solar Acres.

COMMUNITY CONNECTED

For five Thursdays in January and February, 21 fifth graders at CPU Intermediate Elementary School participated in the Junior Achievement (JA) program and learned about the nation's free-market system from ECI REC Engineering Technician Scott McLaughlin.

ECI REC was proud to award \$1,000 scholarships to Drew O'Brien and Braxton Clubb, two young men who plan to pursue careers as lineworkers through Northwest Iowa Community College. Scholarships were also awarded to 10 graduating seniors who plan to further their education in a diverse range of programs.

ECI REC received funds from CoBank's Sharing Success Matching Grant Program. Under the program, CoBank matches charitable contributions by cooperatives to nonprofit organizations in their local communities. ECI REC chose to award matching grants to projects from the Urbana-Polk Township Fire Department and the Benton County Disaster Recovery Coalition.

High school students Jamie Thompson and Kirstie Martin were sponsored by East-Central Iowa REC for the 2016 Youth Tour trip to Washington, D.C. Jamie and Kirstie participated in leadership training, engaged in one-on-one conversations with elected officials,

jump-started their national peer network, learned about electric cooperatives, and toured D.C.

SAFETY

At the October safety meeting, a representative from Van Wert, Inc., performed a review and training on the digital meters used throughout our territory with ECI REC line personnel.

In May, line personnel underwent their annual bucket rescue training. The training provides line personnel with standards for the safe rescue of workers that are incapacitated or exposed to electric shock.

Over 300 second-grade students from Independence, St. Johns, St. Athanasius, and East Buchanan attended a full-day safety event made possible through the Progressive Agriculture Safety Days® grant program, the largest youth rural safety and health education program in North America. ECI REC's Member Service Technician John Tegler led the electric safety demonstration.

KEEPING THE LIGHTS ON

In 2016, the BECCA and Walker substations' transformers were upgraded to new, larger-capacity models to handle the voltage change initiated by ITC Midwest from 34.5 kV to 69 kV. This cost between \$150,000 and \$250,000.

In the Benton County service area, ECI REC contractor Moll's Utility Services completed the Cooperative's Work Plan project to change out 12 miles of unreliable copper-weld conductor (distribution line) to new, more reliable aluminum line.

Infrared surveys were conducted at 24 substations in Benton and Buchanan Counties. Ten problems identified at six substations were all addressed.

In February, Midwest Spray Team & Sales, Inc., a Polk County company, worked in ECI REC territory in both Benton and Buchanan Counties to spray trees or brush that were in contact with or had the potential to interfere with distribution lines or equipment.

Underground systems inspections were completed at the Homer substation in Benton County and the Winthrop substation in Buchanan County. Wisconsin's Badgerland Utility Solutions, LLC, a subcontractor of our regular partner Osmose, performed the inspections.

In March, the Van Horne substation blinked due to a lightning strike that shattered a pole; it was soon replaced.

On July 17, early morning storms caused 15 outages, affecting 434 members. Some of the most substantial damages took place south of Norway in the Benton County service area, where six distribution poles were broken.

LOOKING OUT FOR YOU

Over 175 directors, managers, and staff members from Iowa's electric cooperatives met with nearly 100 state legislators during the Welcome Back Legislative Reception at the State Historical Building in downtown Des Moines. The reception provided an opportunity to meet with recently elected and reelected legislators to discuss issues regarding safe, reliable, and affordable energy options for all Iowans.

Over 200 cooperative supporters, including ECI REC representatives, traveled to Des Moines to advocate for electric cooperatives during the annual REC Day on the Hill event. The co-op representatives focused on educating legislators about four issues important to electric cooperatives: utility-owned solar, a skilled workforce in the state, line personnel safety, and rural economic development.

In conjunction with cooperative managers' statewide spring conference, CEO Steve Marlow attended the Iowa Association of Electric Cooperatives (IAEC) managers' legislative breakfast at the Capitol. 🌱

ANNUAL MEETING DETAILS

Date: June 15

Registration: 10:30 a.m.

Business meeting: 11:00 a.m.

Vinton-Shellsburg High School



CATERED NOON MEAL
REGISTRATION GIFT
WIN A \$50 GIFT CARD

FEATURING GUEST SPEAKER MARY MCLAURY

Touchstone Energy® Cooperative's Chief Operating Officer

Mary is the COO of Touchstone Energy Cooperative—a national network of 750 electric cooperatives across 46 states. She is a native of Vinton, Iowa, and previously worked for the National Rural Electric Cooperative Association's Education and Training Department in Arlington, Virginia.

Director Positions Up for Election at Annual Meeting

31 32 33 34 35 36 31 32						34		35 36 31 32				
Geneseo (133) Tama County	Bruce (134) Benton County	Cedar (135) Benton County	Harrison (136) Benton County	Polk (137) Benton County				6 5 7 8		31 32		
Clark (143) Tama County	11		Jackson (145) Benton County			Illyria (17) Fayette County		(147) 2 1 11 12		1		
Oneida (153) Tama County	Monroe (144) Benton County								16 15 14 13 21 22 23 24			
Smithfield (26) Fayette County			Fairfield (27) Fayette County		Sperry (28) Clayton County							
Jefferson (35) Fayette County			Scott (36) Fayette County		Putnam (37) Fayette County		Cass (38) Clayton County					
			Buffalo (46) Buchanan County		Madison (47) Buchanan County		Richland (48) Delaware County					
										Coffins Grove (58) Delaware County		

District 1: Director
District #11
Incumbent: Jeff Elliott,
Center City
Sponsored by: Jeff
Elliott, Mount Auburn

District 1: Director
District #12
Incumbent: Chris
Elliott, Center Point
Sponsored by: Steve
Elliott, Center Point

District 2:
Director District #26
Running unopposed:
Steve Rau, Stanley

District 1: Director
District #11
Incumbent: Jeff Elliott,
La Porte City
Opposed by: Jeff
Hutton, Mount Auburn

District 1: Director
District #12
Incumbent: Chris
Sackett, Center Point
Opposed by: Steve
Smith, Center Point

District 2:
Director District #26
Running unopposed:
Steve Rau, Stanley



photo by CIPCO


Justin Curry with Independence Plumbing, Heating, and Cooling and Ryan Meier and Jerrod Rechkemmer from Ken's Electric learn about the latest industry technologies during the trade show portion of the Momentum Is Building Conference.

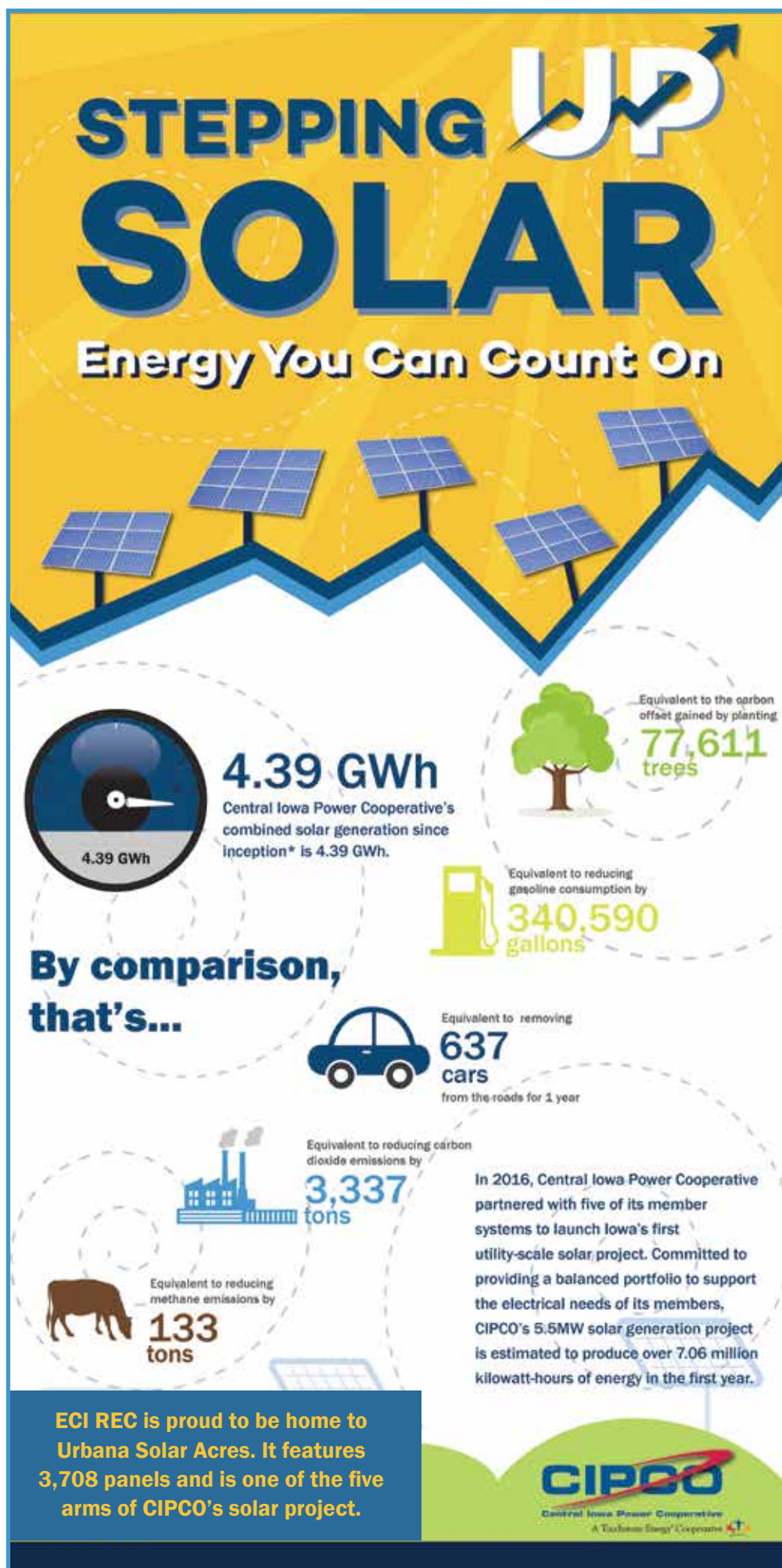
25th Contractor Conference Promotes Energy Efficiency

an Energy Wise story

IOWA'S TOUCHSTONE ENERGY® COOPERATIVES celebrated the 25th annual Momentum Is Building conference February 8–9 at the Sheraton West Des Moines Hotel with its largest attendance ever.

The mission of MIB is to provide a forum for electric technology and energy-efficiency education, as well as to build relationships with the trade professionals who influence electric co-op members' decision-making about home building/remodeling, heating, cooling, water heating, and energy efficiency. Nationally recognized speakers shared their knowledge on topics including the future of home building, electric and mechanical/plumbing code updates, energy modeling, and safety.

Rural electric cooperative personnel from across Iowa joined their local contractors at the conference. Support for the conference comes from Iowa's rural electric cooperatives, along with sponsorship by the Iowa Energy Center. 





12 Students Win \$1,000 Scholarships From ECI REC

a Community Connected feature

EAST-CENTRAL IOWA REC is proud to announce it has awarded \$1,000 scholarships to three young men who plan to begin pursuing careers as lineworkers through the Powerline Technician program at Northwest Iowa Community College, as well as nine graduating seniors who plan to further their education in a diverse range of programs. Congratulations to these deserving students!

POWERLINE TECHNICIAN SCHOLARSHIP WINNERS



1. **Jacob Demuth**, son of Ben Demuth (Marion High School)
2. **Brady Maurer**, son of David Maurer (Wapsi Valley High School)
3. **Noah Studebaker**, son of Troy and Amy Studebaker (Independence Junior and Senior High School)
4. **Jordan Baumgartner**, daughter of Brad and LeAnn Baumgartner – Hawkeye Community College (Starmont High School)
5. **Haley Dinderman**, daughter of Scott and Dana Dinderman – Iowa State University (Vinton-Shellsburg High School)
6. **Claire Holtz**, daughter of Richard and Dawn Holtz – Kirkwood Community College (Center Point-Urbana High School)
7. **Colin Hurley**, son of William and Cristina Hurley – Iowa State University (Benton Community Schools)
8. **Kaylee Kortenkamp**, daughter of Don and Kara Kortenkamp – Iowa State University (East Buchanan High School)
9. **Eric Lympus**, son of Chad and Denise Lympus – Iowa State University (Independence Junior and Senior High School)
10. **Natalie McMillan**, daughter of John and Nancy McMillan – Iowa State University (Oelwein High School)
11. **Hans Riensche**, son of Ben and Lisa Riensche – Iowa State University (Jesup Community School)
12. **Payton Sash**, daughter of Kevin and Mary Jo Sash – Iowa State University (Union High School)

GENERAL SCHOLARSHIP WINNERS



Students Chosen for Youth Tour to Washington, D.C.



MACY ARBUCKLE is a home-schooled junior and the daughter of Jim and Carol Arbuckle. Through the Home-School Assistance Program, Macy participates in yearly drama productions. As the recipient of a scholarship from the Iowa Honey Producers Association, Macy earned an entire hive

setup. At Benton County's Ag Day, Macy helped educate third-graders about bees.

Macy plays piano and guitar and teaches guitar lessons. Her community activities include membership at Oak Grove Christian Church and volunteering for the Ronald McDonald House.



CADE SHRAMEK attends Prairie High School and is the son of Don and Lora Shramek of Amana. Cade is the percussion section leader for symphonic band and takes part in marching band, chorale choir, select men's choir, and National Honor Society.

Cade plays on the Prairie soccer team as well as the Premier Soccer Club of Eastern Iowa. As a member of Monroe Hustlers 4-H Club, Cade has served as treasurer and on the recreation committee. His other community involvement includes serving on the Johnson County Youth Council, and he is very involved with St. Mary's church in Oxford.

Air-Source Heat Pumps: A Good Fit for ECI REC Members

an Energy Wise feature | Source: energy.gov

AN AIR-SOURCE HEAT PUMP can provide efficient heating and cooling for your home. When properly installed, it can deliver one-and-a-half to three times more heat energy to a home than the electrical energy it consumes. How? A heat pump moves heat rather than converting it from a fuel like combustion heating systems do.

For many years, air-source heat pumps have been a viable choice in nearly all parts of the United States, with the exception of those that experienced extended periods of sub-freezing temperatures. But in recent years, air-source heat pump technology has advanced, making it a legitimate space-heating alternative in colder regions.


HOW THEY WORK

A heat pump's refrigeration system consists of a compressor and two coils made of copper tubing, one inside and one outside. The coils are surrounded by aluminum fins to aid heat transfer. In heating mode, liquid refrigerant in the outside coils extracts heat from the air and evaporates into a gas. The indoor coils release heat from the refrigerant as it condenses back into a liquid. A reversing valve, near the compressor, can change the direction of the refrigerant flow for cooling or for defrosting the outdoor coils in winter.

SELECTING A HEAT PUMP

First, choose a heat pump with the blue and white ENERGY STAR® label, which means the unit uses about 5% less energy than conventional new models.

You also need to know what to look for on the black and yellow EnergyGuide sticker, which displays the heat pump's heating and cooling efficiency performance rating, comparing it to other available makes and models.

Heating efficiency for air-source electric heat pumps is indicated by the heating season performance factor* (HSPF). It rates both the efficiency of the compressor and the electric-resistance elements. Cooling efficiency is indicated by the seasonal energy efficiency ratio** (SEER). In general, the higher the SEER, the higher the cost. However, a new air-source heat pump replacing a vintage unit will use much less energy, cutting air-conditioning costs substantially. The energy savings these units deliver can return the higher initial investment several times during the heat pump's life. 



MONEY SMART TIP: Shop With ECI REC Air-Source Heat Pump Rebates In Mind

- » Standard Air-Source Heat Pump \$150/ton (including mini-splits)
- » Hybrid Air-Source Heat Pump \$250/ton
- » ENERGY STAR Bonus \$350/unit (Minimums: SEER 15.0, HSPF 8.5, EER 12.5)

*HSPF is calculated using the total space heating required during the heating season, expressed in Btu, divided by the total electrical energy consumed by the heat pump system during the same season, expressed in watt-hours.
**SEER is calculated using the total heat removed from the conditioned space during the annual cooling season, expressed in Btu, divided by the total electrical energy consumed by the heat pump during the same season, expressed in watt-hours.

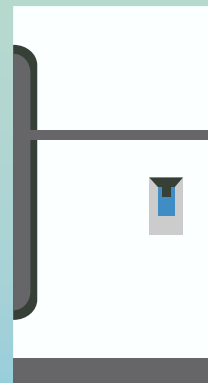
MAY IS NATIONAL ELECTRICAL SAFETY MONTH

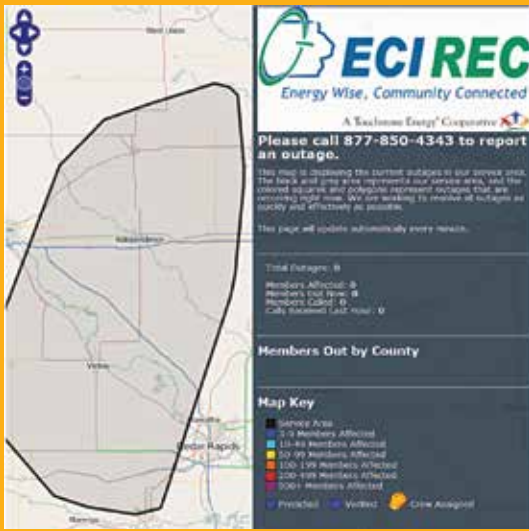
ECI REC is celebrating National Electrical Safety Month in May. We're not just focused on safety associated with poles and wires, we're concerned about the safety in your home as well. Electricity is the cause of over 140,000 fires each year, resulting in more than 500 deaths, 4,000 injuries, and \$1.6 billion in property damage according to Electrical Safety Foundation International (ESFI).

"Helping keep the communities we serve safe is important to everyone at ECI REC," said Steve Marlow, CEO. "We encourage you to keep the following tips in mind to protect your family and home."

IN THE KITCHEN

- » Locate all countertop appliances away from the sink.
- » Dirt buildup on your refrigerator coils can reduce efficiency and create fire hazards; vacuum them several times a year.
- » Make sure the top of your cooking range and the storage area above it are free of combustibles, such as potholders and plastic utensils.





Want Up-to-the-Minute Outage Info? We've Got You Covered!

When a storm or equipment issue leaves you in the dark, you want to know what progress we are making toward resolving the issue. We've got you covered with our online Outage Map, available on the home page of our website and via your Smart-Hub bill payment app on your smartphone.

This near-real-time outage map is integrated with our member-accounts and shows a bird's-eye view of ECI REC's service territory. When three or more outages occur, the map is populated and is automatically updated every minute. Members can zoom in within a half-mile radius. A key shows how many members are affected by an outage, if it was predicted, if it has been verified, and if crews have been dispatched to address the outage. A call log shows the number of members who have contacted us regarding an outage at hand.

Lights Out? Follow These Steps

a Keeping the Lights On reminder

ECI REC is committed to providing reliable service. But not all outages can be avoided. Weather, animals, accidents, and service interruptions from our power supplier can all cause outages. If an outage occurs, please do the following:

1

Check to determine if power is lost to your entire home or farmstead.



Be sure to check fuses and circuit breakers, which may include both the meter pole panel and the panel located inside your home.

2

3

To help determine the extent of the problem, check with neighbors to see if they have electricity. This will help our lineworkers know if it is just your service or perhaps a main breaker serving several member-consumers in your area.



If you cannot restore power by resetting the circuit breaker, call us at 877-850-4343 to report the outage.

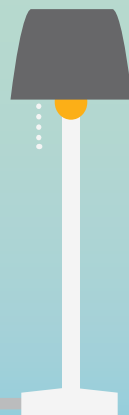


If you call after our office has closed, our phones will automatically transfer you to our after-hours call service, the Cooperative Response Center (CRC). These professionals have access to our outage management system and will assist you in a timely manner.

4

LIGHT THE WAY

- » The wattage of the bulbs you use in your home should match what's indicated on the light fixture. Overheated fixtures can lead to a fire.
- » Check lamp cords to make sure they are in good condition—not damaged or cracked. Do not attempt to repair damaged cords yourself.
- » Extension cords should not be used to provide power on a long-term or permanent basis. Have additional receptacles installed by a professional to provide power where needed.



BE PREPARED

- » Nearly two-thirds of fire deaths result from fires in homes without working smoke alarms. Smoke alarms should be located on every level of your home, inside each bedroom and outside each sleeping area.
- » Test smoke alarms every month. Batteries should be replaced at least once a year—or sooner if indicated in the manufacturers' instructions.
- » Talk to your family about an emergency plan in the event of a fire in your home. If you have small children, include them in planning an emergency escape route—they are more likely to remember the plan if they're involved in creating it.





Independence Operations Center Construction Progress

photos by Lisa Franck



Co-op Connections Program Puts Value in Your Wallet



Use your Co-op Connections® Card online and at the participating businesses below and discover the value of being a co-op member at ECI REC!

E & T NAPA Auto Parts | Pinicon Ford Lincoln Mercury | Bill's Pizza & Smokehouse | Okoboji Grill | Subway | Heartland Acres Agribition Center | Clingman Pharmacy, Inc. | Styles Unlimited | Cy & Charley's Tire & Appliances | Frazier Nursery | In the Country Garden & Gifts | Michael & Dowd | THE NEWS/Buchanan County Review | Office Towne Inc., Radio Shack | Berry's Lanes, Inc. | Viking Sewing Center | Emmy Lou Candles Cameron Clothing Company | Fabulous Fridays | Henkle Creek Mercantile | Polar Blair's Den | BEST WESTERN PLUS Independence Inn & Suites | Modern Motel



2016 Audit Successful

a Looking Out for You update

Craig Popenhagen, Luke Greden, Justin Fahse, and Sterling Shatek of CliftonLarsonAllen LLP recently conducted ECI REC's 2016 financial audit, which went very well. Due to the thorough preliminary work, the on-site audit was completed within two days. "We were very pleased with how smoothly and efficiently the process went," said CEO Steve Marlow.

STATEMENT OF REVENUE AND EXPENSE

REVENUE	2016	2015
Operating Revenue and Patronage Capital.....	\$22,143,144	\$22,242,298
EXPENSE		
Purchased Power	\$13,292,348	\$13,340,338
Distribution Expenses - Operations	\$1,799,415	\$1,865,028
Distribution Expenses - Maintenance.....	\$579,862	\$637,492
Customer Accounts Expense	\$499,623	\$522,193
Customer Service & Informational Expense	\$321,768	\$343,334
Administrative & General Expense	\$1,534,911	\$1,295,138
Depreciation	\$1,857,673	\$1,777,509
Taxes - Property & Other	\$22,123	\$22,298
Interest on Long-Term Debt.....	\$1,002,386	\$1,154,668
Other Deductions & Interest Expense.....	\$39,890	\$17,243
TOTAL EXPENSE.....	\$20,949,998	\$20,975,240
Operating Margins	\$1,193,146	\$1,267,057
Non-Operating Margins.....	\$62,343	\$6,863
Generation & Transmission Capital Credits.....	\$1,016,545	\$669,314
Other Capital Credits & Patronage Dividends	\$150,351	\$148,935
Total Operating & Non-Operating Margins.....	\$2,422,384	\$2,092,169

BALANCE SHEET

ASSETS.....	2016	2015
Current Assets & Other Debits.....	\$14,169,424	\$13,002,362
Fixed Assets (Net Utility Plant)	\$47,435,842	\$47,186,414
Total Assets & Other Debits	\$61,605,266	\$60,188,776
LIABILITIES		
Total Current & Accrued Liabilities	\$3,920,992	\$3,916,421
Total Fixed Long-Term Debt & Deferred Credits.....	\$26,434,870	\$26,889,086
Total Margins & Equities	\$31,249,404	\$29,383,269
Total Liabilities & Other Credits	\$61,605,266	\$60,188,776

COMPARATIVE OPERATING STATISTICS

Miles of Line Energized	2,273	2,275
New Services Connected.....	80	86
Total Services in Place.....	9,394	9,398
kWh's Purchased From CIPCO	218,180,704	213,992,697
Cost Power Purchased	\$13,272,255	\$13,322,207
Percent Line Loss.....	5.12%	5.28%

OPERATING REVENUE	\$22,089,569	\$22,170,110
Average kWh's Used per Month per Consumer	1,984	1,945
Average Monthly Bill.....	\$211.54	\$212.70
Average Cost per kWh to Consumer	\$0.1066	\$0.1094

LOAN FUNDS

CFC	\$25,603,568	\$26,097,809
Other.....	\$400,000	\$400,000
Total Loan Funds.....	\$26,003,568	\$26,497,809

so much more to the event.

Did you know the Annual Meeting is about the issues affecting our community? For example, Iowa cooperatives take an active role in communicating with legislators and those running for office about issues that could impact how much our members pay for electricity, even planning events to ask questions of presidential candidates prior to the February caucuses. The Annual Meeting gives you the opportunity to share your concerns about affordable electricity with ECI REC leaders who can carry these on to legislators.

Your Annual Meeting is also the occasion to exercise one of the greatest benefits of being an electric co-op member: voting for the upcoming year's Board of Directors.

ECI REC is not owned by faraway investors, and it is not run by an appointed board of directors. Your Cooperative is run by a democratically elected Board that is given the privilege to serve because of your vote.

So at this year's Annual Meeting, not only will you be informed about your cooperative (and maybe win a prize!), you will feel good

knowing that you had a voice in a very important decision that impacts one of our most vital resources—electricity.

From all of your friends at ECI REC, we hope to see you in June at the Annual Meeting. 🤝

YOUR BOARD



Board District 11 - Jeff Elliott

Board District 12 - Chris Sackett

Board District 13 - Allen Albers

Board District 15 - Gary McKenna

Board District 17 - Burt S. Byers
(2016/2017 Vice President)

Board District 21 - Don Shonka

Board District 23 - Jim V. Alberts
(2016/2017 Secretary/Treasurer)

Board District 24 - Jim Barz

Board District 26 - Steve Rau
(2016/2017 President)

Board District 27 - Ryan Kress
(2016/2017 Asst. Secretary/Treasurer)

ECI REC Celebrates Leaders' Accomplishments

photo by Lisa Franck



TERESA FLOYD > In February, Manager of Finance and Consumer Service Teresa Floyd was recognized for 25 years of service to ECI REC.

Teresa has been in her current role since 2003; she began her career with rural cooperatives in 1992 as cost records clerk with ECI REC parent co-op Benton County ECA, which was located in Vinton. Since then,

she has served as general ledger administrator, director of finance and administration, and office manager. To honor Teresa, CEO Steve Marlow presented her with a personalized watch and an outstanding service award at a safety meeting. Way to go, Teresa, and congratulations on 25 years of dedicated service!



RYAN KRESS > East-Central Iowa REC Director Ryan Kress recently earned his Director Gold Certificate. Director Gold is an NRECA program geared toward directors who are committed to continuing their education beyond the Credentialed Cooperative Director Certificate (CCD) and Board Leadership Certificate (BLC). After a director earns those designations, they complete three additional credits to obtain Director Gold. "In obtaining this certificate, Director Kress has demonstrated to ECI REC members and other stakeholders his ongoing commitment to advancing his

knowledge and performing his fiduciary duty to the best of his ability," said ECI REC CEO Steve Marlow.

CLASSIFIEDS: Free to members only

FOR SALE: Quick-attach grain table, \$200; 200-gallon fuel barrel with stand, \$25; wire corn crib, 1,200 bushel, \$100; 1,200-bushel grain bin, \$300; auger wagon, 80-bushel, \$150; 12 feeder pigs, 150 lbs., \$85/head. Ph: 319-551-2839

FOR SALE: Clean one-gallon glass jars with metal lids, have large quantity, \$2 each. Ph: 319-327-0105

FOR SALE: 2004 29' Wildcat 5th Wheel camper by Forest River, has duel rear slides, queen-size bed, tub/shower bath, sleeper sofa, dinette table with 4 chairs and internal and external speakers, asking \$12,500 or best offer. Ph: 319-350-3787 or email jacm@fmtcswb.com

Please email your ad to classifieds@ecirec.coop. Ads for the July/Aug. Heartland Link must be received by June 1, 2017.

East-Central Iowa REC will publish non-commercial advertisements as a service to our members. All ads are free. They may be submitted by any member or employee of East-Central Iowa REC. Ads should contain a phone number, name (if desired), a brief description of items with price if applicable. Each ad is limited to maximum of 50 words; please type or print clearly. Editor reserves the right to edit or reject any ad. No ads will be taken over the telephone—please email, mail, or bring your ad to the office.

Heartland Link (USPS No. 313-160) is published bimonthly for \$3.30 per year by East-Central Iowa Rural Electric Cooperative, 2400 Bing Miller Ln., Urbana, IA 52345-0248 with outposts located at 1707 First St. E., Independence, IA 50644 and 1600 West D. St., Vinton, IA 52349. Periodicals class postage paid at Independence, IA, and additional mailing offices.

POSTMASTER: Send address changes to Heartland Link, 2400 Bing Miller Lane, PO Box 248, Urbana, IA 52345.

Phone: (319) 443-4343
Ownership: East-Central Iowa Rural Electric Cooperative
Publisher: Steve Marlow
Editor: Lisa Franck

East-Central Iowa REC is an equal opportunity employer.

CLIP AND MAIL

See page 2 for the Member Challenge questions.

Answers: 1. _____ 2. _____ 3. _____

Please note: NO ANSWERS will be taken over the phone.

Members get connected at www.ecirec.coop



24-Hour Bill Pay With SmartHub

See account information at ecirec.smarthub.coop or download the app.



Outage Center & Map

View current outages via SmartHub or at outages.ecirec.coop:81.



Online Forms

Access rebate, service request, and program sign-up forms.



Call Before You Dig

Notify utilities before you dig at www.iowaonecall.com or call 811.



Facebook

Find news and updates at facebook.com/eastcentraliowarec.



Co-op Connections®

Get discounts on everyday expenses. Visit www.connections.coop or download the mobile app.



Heartland Link E-Newsletter

Email ecirec@ecirec.coop and ask to receive our newsletter via email.



HomeEnergyCalculator

Break down monthly energy costs. Click the HomeEnergySuite™ icon at ecirec.coop.



Iowa Rural Power

Join grassroots advocates for Iowa's electric cooperatives. Visit www.iaruralpower.org.



Message From the CEO

Join Fellow ECI REC Members at the 2017 Annual Meeting

IT'S THAT TIME of year again! East-Central Iowa REC is gearing up for the 2017 Annual Meeting of the Members, which will be held Thursday, June 15, at Vinton-Shellsburg High School in Vinton. Registration begins at 10:30 a.m., and the business meeting starts at 11:00.

The Annual Meeting is a special time for Cooperative members to gather, share experiences, hear from Co-op leadership, and perhaps most importantly vote to elect your new Board members.

ECI REC employees work hard to host this event, and we encourage you to attend and exercise some of the many rights you have as a member of an electric cooperative. We know the food and prizes are the best parts of the meeting, but there is