

APRIL 2021



ATTENTION MEMBERS: Use Caution When Burning Ditches

Burning helps clean things up, but it can also cause extensive damage to Cooperative property, resulting in electric service problems. Members involved in such fires may be invoiced for damage they cause to Cooperative property.

TWO TIPS FOR SAFE BURNING

- 1 Green, or newer, poles are more susceptible to burning—use extra caution.
- 2 Always be aware of the locations of poles, anchor guy assemblies, underground cabinets, and other important Cooperative equipment when burning.



BENEFICIAL electrification

A SMARTER WAY TO POWER YOUR LIFE

Two Ways You Can Go Electric this Spring



*Unlike models from only a few years ago, many of today's electric mowers have the power and battery life to keep up with gas mowers.
Photo credit: Sjancauskas | Dreamstime.com.*

Spring is here, which means 'tis the season for landscaping and home improvement projects. As you break out your tools, ECI REC invites you to consider going electric!

Electricity is a cheaper, greener, and smarter way to meet energy needs. That's why many consumers are switching from traditional gas-powered tools and appliances to electric. This trend is called "beneficial electrification."

Here are two beneficial electrification ideas to consider this spring.

Invest in an electric lawn mower

Electric mowers have come a long way in the last few years. Newer cordless electric mowers are more expensive than their gas-powered counterparts, but much of the upfront cost can be recovered, since electricity is less expensive than gas. Electric engines are also quieter and generally require less maintenance.

Electric mowers work for most lawns, with batteries that typically require only an hour or two to fully charge. Most batteries can run for a full hour. That said, if you have a big yard (half an acre or larger), a gas-powered option may still best suit your needs.

Install an electric water heater

Electric water heaters are safer than propane (gas) heaters. They require no venting or gas line, and they offer no CO₂ concerns. They're also low-maintenance and require zero clearance to install.

It will cost a family of four about \$40 per month to operate an energy-efficient 50-gallon electric water heater. Members who buy a new, energy-efficient electric water heater are eligible to receive a \$75 rebate. You can receive a \$650 rebate for purchasing a heat pump water heater.

Questions about electric lawn mowers, water heaters, or beneficial electrification? Call 877-850-4343 and let us help!

ECI REC Awards Scholarships to High School Seniors

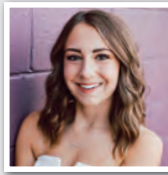
East-Central Iowa REC is proud to announce we have awarded \$1,000 scholarships to 12 graduating seniors who plan to further their education in a diverse range of programs. Congratulations to these deserving students!



Samantha Adams
North Linn
Parents: Michelle and Ted Adams of Walker
KIRKWOOD COMMUNITY COLLEGE, SURGICAL TECH



Amanda Becker
Starmont
Parent: Janet Becker of Dundee
UNIVERSITY OF WISCONSIN-PLATTEVILLE, AGRICULTURE EDUCATION/BUSINESS



Rachel Clayberg
Jesup
Parents: Kelly and Nate Clayberg of Independence
COE COLLEGE, NURSING



Christina Harrelson
Vinton-Shellsburg
Parents: Tom and Mary Harrelson of Vinton
UNIVERSITY OF NORTHERN IOWA, BUSINESS TEACHING



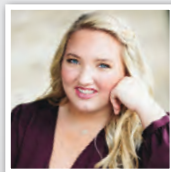
Kaylee Kleitsch
Wapsie Valley Community
Parents: Brenda and Richard Kleitsch of Fairbank
IOWA STATE UNIVERSITY, AGRICULTURE AND SOCIETY



Carter Michels
Dunkerton
Parents: Christopher and Tiffanie Michels of Fairbank
IOWA STATE UNIVERSITY, ENGINEERING



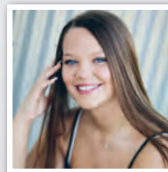
Lukas Recker
East Buchanan Community
Parents: Tim and Kristy Recker of Aurora
UPPER IOWA UNIVERSITY, AGRICULTURAL BUSINESS



Rylee Sash
Union
Parents: MaryJo and Kevin Sash of LaPorte City
IOWA STATE UNIVERSITY, EVENT AND HOSPITALITY MANAGEMENT



Megan Schulte
Benton Community
Parents: Chirstopher and Kelly Schulte of Norway
UNIVERSITY OF NORTHERN IOWA, COMMUNICATION SCIENCES AND DISORDERS



Jaden Schwarting
Independence
Parents: Tony and Julie Schwarting of Independence
HAWKEYE COMMUNITY COLLEGE, NURSING



Kennedy Vogt
Center Point-Urbana
Parent: Shaun Vogt of Vinton
UNIVERSITY OF NORTHERN IOWA, PSYCHOLOGY



Grace Zaugg
Xavier
Parents: Michelle and Gary Zaugg of Watkins
COLORADO STATE UNIVERSITY, ARCHITECTURAL DESIGN

Photo credit: Cedar Wood on Unplash

Plant the Right Tree in the Right Place

Replanting trees after the August 2020 derecho is top of our members' minds, and for good reason. But the wrong tree in the wrong place can be a hazard ... especially to power lines.

For more tips on smart tree planting in your community, contact your local electric cooperative or visit www.ArborDay.org.

Happy Arbor Day!
Friday,
April 30

April
Is Safe
Digging
Month!

Be Safe. Always call 811 before you dig to locate any buried utility lines.



Know what's below.
Call before you dig.

LARGE TREES

Height/spread of more than 40 feet, such as:

- Maple
- Birch
- Oak
- Sweetgum
- Spruce
- Linden
- Pine

MEDIUM TREES

Height/spread of 25 to 40 feet, such as:

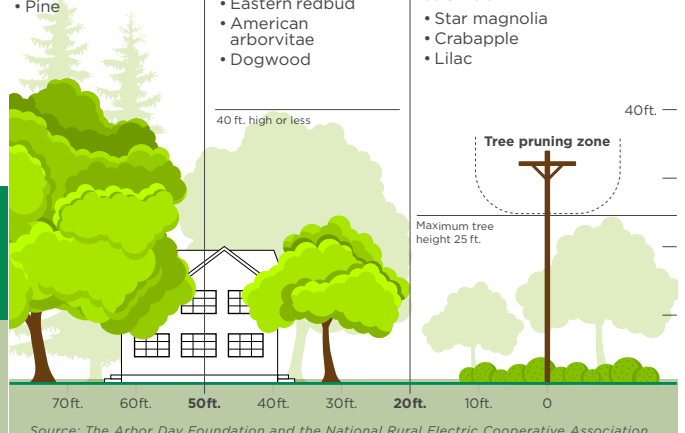
- Washington hawthorn
- Goldenrain tree
- Eastern redbud
- American arborvitae
- Dogwood

SMALL TREES

Avoid planting within 20 feet of power lines. When planting within 20 feet is unavoidable, use only shrubs and small trees.

Height/spread of no more than 25 feet, such as:

- Star magnolia
- Crabapple
- Lilac



Source: The Arbor Day Foundation and the National Rural Electric Cooperative Association

MEMBERSHIP BENEFITS



Your Co-op Connections® Card offers you Healthy Savings and local and national deals. Use your card to start saving today! Questions? Email coopconnections@ecirec.coop.



Use SmartHub to pay for FREE online! Visa, Discover, American Express, and MasterCard accepted. While you're there, view your monthly usage data in helpful chart formats.