

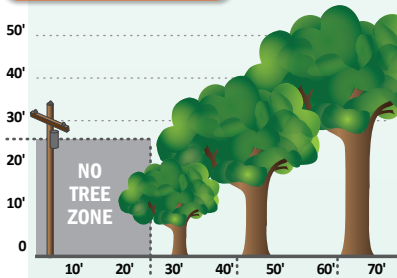
## START IN THE RIGHT SPOT

Planting new trees this fall to replace those lost during the August 10 derecho?

Follow these guidelines to ensure they don't get an unwanted haircut down the road!

- » Choose the spot based on the tree's full-grown height and spread.
- » Obey the no-tree zone: Don't plant trees within 25' of power lines.

### Tree Planting Guide



**SMALL TREES:** Plant trees less than 25' in height/spread at least 25' from lines.

**MEDIUM TREES:** Plant trees 25'-40' in height/spread at least 40' from lines.

**LARGE TREES:** Plant trees larger than 40' in height/spread at least 60' from lines.



Know what's below.  
Call before you dig.

## Your Support Can Help Influence Energy Policy

Today more than ever, what is happening in Des Moines, Iowa, and Washington, D.C., can impact your cost of power and its reliability. Through political action committees (PACs), members can support the campaigns of those officials who have shown themselves supportive of our goals. Because it is illegal for cooperative funds to be contributed to election campaigns, these PACs rely on donations from cooperative employees, directors, and members like you.

The two PACs members can consider donating to are the Action Committee for Rural Electrification (ACRE), which sends funds to candidates for federal elections, and the Friends of Rural Electrification (FORE), which supports candidates running for state office. Sign up today by filling out the form below.

### Yes, I will support ACRE and FORE.

I will make a one-time contribution of \$\_\_\_\_\_. My check is enclosed.  
Make checks payable to REC Transmittal Account.

I will contribute monthly. Please add \$\_\_\_\_\_ each month to my electric bill.

Name: \_\_\_\_\_ Member Account #: \_\_\_\_\_

Address: \_\_\_\_\_ City: \_\_\_\_\_

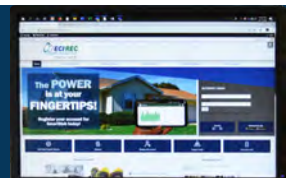
State: \_\_\_\_\_ Zip: \_\_\_\_\_ Email: \_\_\_\_\_


Signature: \_\_\_\_\_ Date: \_\_\_\_\_

Mail form to: ECI REC | PO Box 248 | Urbana, IA 52345

## OUR NEW WEBSITE IS NOW LIVE

Let us know what you think of the refreshed [ecirec.coop](http://ecirec.coop)!



2400 Bing Miller Lane | PO Box 248 | Urbana, IA 52345-0248 | Toll Free: 877-850-4343  
Email: [ecirec@ecirec.coop](mailto:ecirec@ecirec.coop) | Web: [www.ecirec.coop](http://www.ecirec.coop) | [facebook.com/eastcentraliowarec](https://www.facebook.com/eastcentraliowarec)   
**East-Central Iowa Rural Electric Cooperative is an equal opportunity provider and employer.**

# Program Offers Members a Helping Hand

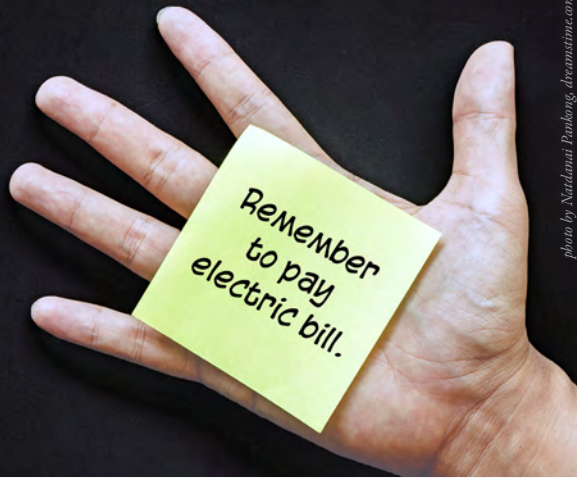


photo by Natdonat Panlongdreamstime.com

## Yes, I want to enroll in the Helping Hand Reminder program.

Member Name: \_\_\_\_\_

Member Account #: \_\_\_\_\_

Phone: \_\_\_\_\_

Other Contact Phone: \_\_\_\_\_

Name and address of person to be contacted in case of delinquent payment:

Name: \_\_\_\_\_

Address: \_\_\_\_\_

City: \_\_\_\_\_

State: \_\_\_\_\_ Zip: \_\_\_\_\_

Daytime Phone: \_\_\_\_\_

Evening Phone: \_\_\_\_\_

Email Address: \_\_\_\_\_

Member's Signature for Authorization:

\_\_\_\_\_

Contact Person's Signature:

\_\_\_\_\_

Mail form to: ECI REC | PO Box 248 | Urbana, IA 52345

If your electric bill is often late, consider enrolling in East-Central Iowa REC's free Helping Hand Reminder program. When the account of an enrolled member becomes delinquent, ECI REC notifies their designated contact person. The contact person then reminds the member who missed their payment.

### HOW TO ENROLL

- » Fill out the Helping Hand Reminder authorization form online at [ecirec.coop](http://ecirec.coop) under Account Services > Member Programs
- » Mail in the form to the right

Members can withdraw from the program at any time by contacting an ECI REC consumer services representative at 877-850-4343.

## NATIONAL FARM SAFETY & HEALTH WEEK

September 20-26, 2020

### HARVEST SAFETY TIP

Maintain a 10-foot clearance around all utility equipment in all directions.



## MEMBERSHIP BENEFITS



Your Co-op Connections® Card offers you Healthy Savings and local and national deals. Use your card to start saving today! Questions? Email [coopconnections@ecirec.coop](mailto:coopconnections@ecirec.coop).



Use SmartHub to pay for FREE online! Discover, Visa, and MasterCard accepted. While you're there, view your monthly usage data in helpful chart formats.



Sign up today to receive FREE energy tips and resources in your inbox. Go to [www.myenergytips.com](http://www.myenergytips.com) and subscribe to the monthly Watts \$mart e-newsletter.