

Don't let winter weather
inflate your energy costs.

SAVE OVER 50%

on winter home heating bills
with **Heat Plus** from ECI REC.

Heat Plus is primarily a residential
option, but your business may qualify.

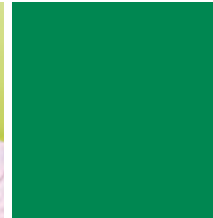
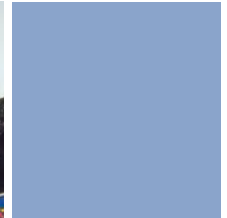
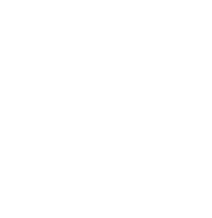
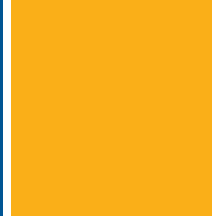
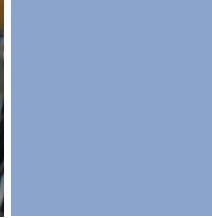
Call 877-850-4343
for more information.



Did you know ECI REC offers
rebates on:

- Electric Heating Equipment
- Indoor Air Quality Systems
- ENERGY STAR® Appliances
- Security Lights
- Weatherization

Heat Plus



Contact Information

ADDRESS:

2400 Bing Miller Lane
PO Box 248
Urbana, IA 52345-0248

PH: 319-443-4343

TOLL FREE: 877-850-4343

FAX: 319-443-4359

EMAIL: ecirec@ecirec.coop

WEB SITE: www.ecirec.coop

Hours

MONDAY-FRIDAY: 8:00 a.m. to 4:30 p.m.
Closed Saturdays, Sundays, and holidays

Special
all-electric
winter heating rate



facebook.com/eastcentraliowarec

East-Central Iowa Rural Electric Cooperative
is an equal opportunity provider and employer.

MS-0024 11-26-18



A Touchstone Energy® Cooperative

Heat Plus Program

From October 1 to May 31, East-Central Iowa REC offers a special **Heat Plus** heating rate that can **save qualifying members up to 50%** on winter heating bills.

Call to see if your home, office, business, or shop qualifies for these savings.

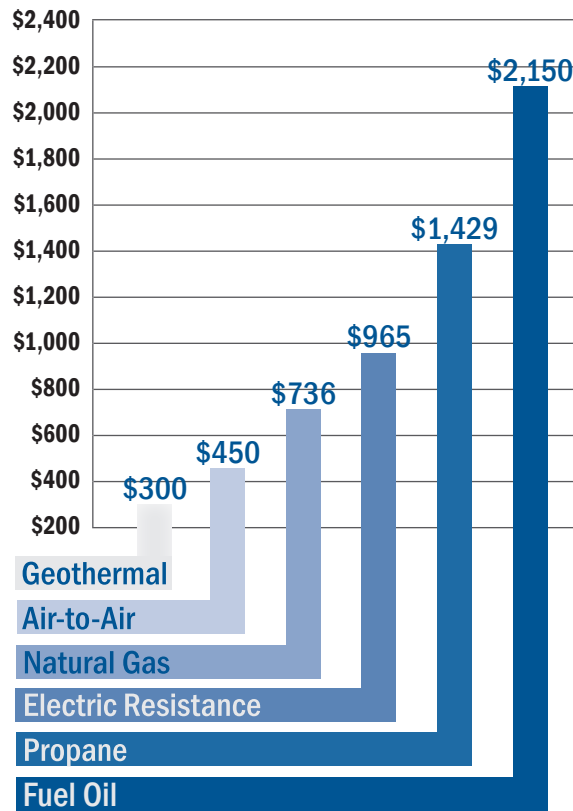
877-850-4343

Heat Plus – Current Rate

0.0485 cents/kWh

2018 - 2019 Projected Heating Costs*

Cost per year based on heating a 1,500-square-foot residence in the Midwest with basement and average insulation. Geothermal and air-to-air heat pump costs do not include resistive backup heat.



*Energy Information Administration, Table WF01

To qualify for the **Heat Plus** rate, your heating system must:

- Be electric and be metered separately.
- Use the primary electric heating source first, with the backup system operating only when the primary system is unable to satisfy the indoor thermostat setting.
- Use the primary electric system to heat an area of 400 square feet or more.
- Use a 50-gallon or larger electric water heater to provide 100% of the domestic water heating for the home (except for the energy supplied from an electric heat pump desuperheater).

