

## Students, Are You Ready to Serve as a Community Leader?

Calling all high schoolers: Attend our leadership development Zoom sessions in October for a chance to win a \$1,000 college scholarship and AirPods! Scan the QR code to register.

Iowa's electric cooperatives are thrilled to offer another opportunity to experience the **Iowa Youth Leadership Academy's** three-part webinar series on October 2, 14, and 23. During this year's video series, dynamic speakers will teach students leadership skills, advocacy, the cooperative business model, and electric cooperative career opportunities.

Once registered online, students can attend the webinars from their own computer or mobile device. Each Zoom session will last

around 45–60 minutes and will focus on a specific topic: the cooperative business model, advocacy, and leadership.

At the end of each live session, one lucky attendee will be selected at random to win a pair of Apple AirPods. Students who attend all three sessions will be entered into a random drawing for a \$1,000 college scholarship. All students who register online by September 30 will receive a special box of co-op goodies in the mail.



## National Farm Safety and Health Week

Learn more at: [necasag.org](https://necasag.org)

*Photo credit: Adobe Stock, Craig Zerbe*

## Safety First, Avoid the Worst | September 21–27, 2025

### Daily Topics:

**MON., SEPT. 22** - Equipment and Rural Roadway Safety

**TUES., SEPT. 23** - Health and Wellness

**WEDS., SEPT. 24** - Generations of Farming

**THURS., SEPT. 25** - Confined Spaces

**FRI., SEPT. 26** - ATV/UTV

## Program Offers Members a Helping Hand

East-Central Iowa REC members have the option of enrolling in the Helping Hand Reminder program. When the account of an enrolled member becomes delinquent, ECI REC notifies their designated contact person, who can then notify the enrolled member that their payment is due.

### HOW TO ENROLL

- » Fill out the Helping Hand Reminder authorization form online by scanning the QR code above or going to [ecirec.coop](https://ecirec.coop), Account Services > Member Services > Member Programs > Helping Hand Reminder.
- » Mail in the form to the right.

Members can withdraw from the program at any time by contacting an ECI REC member service representative at 877-850-4343.



## Yes, I want to enroll in the Helping Hand Reminder program.

Member Name: \_\_\_\_\_ Member Account #: \_\_\_\_\_

Phone: \_\_\_\_\_ Other Contact Phone: \_\_\_\_\_

**Name and address of person to be contacted in case the account becomes delinquent:**

Name: \_\_\_\_\_

Address: \_\_\_\_\_

City: \_\_\_\_\_ State: \_\_\_\_\_ Zip: \_\_\_\_\_

Daytime Phone: \_\_\_\_\_ Evening Phone: \_\_\_\_\_

Email Address: \_\_\_\_\_

Member's Signature for Authorization: \_\_\_\_\_

Contact Person's Signature: \_\_\_\_\_

Mail form to: ECI REC | PO Box 248 | Urbana, IA 52345

2400 Bing Miller Lane | PO Box 248 | Urbana, IA 52345-0248 | Toll Free: 877-850-4343

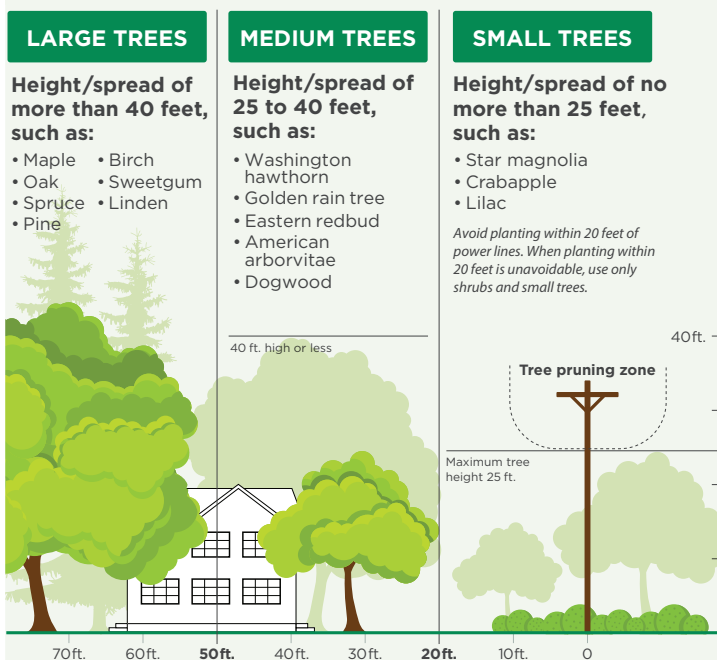
Email: [ecirec@ecirec.coop](mailto:ecirec@ecirec.coop) | Web: [www.ecirec.coop](http://www.ecirec.coop) | [facebook.com/eastcentraliowarec](https://facebook.com/eastcentraliowarec)

**East-Central Iowa Rural Electric Cooperative is an equal opportunity provider and employer.**

# Plant the Right Tree in the Right Place

Putting the wrong tree in the wrong spot can be a hazard ... especially to power lines.

Be safe if you plant trees this fall. Always call 811 before you dig to locate any buried utility lines.



Be safe! Always call 811 before you dig to locate any buried utility lines.

Source: The Arbor Day Foundation and the National Rural Electric Cooperative Association



Know what's below.  
Call before you dig.

For more tips on smart tree planting in your community, contact your local electric cooperative or visit [www.ArborDay.org](http://www.ArborDay.org).



America's Electric Cooperatives | PAC  
Make Rural Voices Heard

America's Electric Cooperatives is the non-partisan political action committee (PAC) of the NRECA. With nearly 35,000 donors who contribute, this PAC supports political candidates who support issues important to electric co-ops.

America's Electric Cooperatives PAC allows electric co-ops to financially support federal candidates through personal dollars raised from co-op leaders and member-consumers. Your PAC contribution builds on our collective strength, which is grounded in the relationships between local electric co-ops, the communities they serve, and the candidates seeking to represent them.

For just a small amount a month, you can be sure your voice is heard in Washington, D.C. For more information on how to join, simply visit [cooperative.com/pacdonation](http://cooperative.com/pacdonation) or complete and return the form below.

*Contributions to the NRECA America's Electric Cooperatives PAC are not tax deductible for federal income tax purposes. Contributions to America's Electric Cooperatives PAC are voluntary and will be used for political purposes. You have the right to refuse to contribute without reprisal. Federal law prohibits contributions from foreign nationals who lack permanent resident status. Any contribution guidelines presented are merely suggestions. You are free to contribute more or less than the suggested amounts, or not at all. The NRECA will not favor or disadvantage anyone by reason of the amount contributed or a decision not to contribute. For more information on the PAC, please contact your local cooperative or the NRECA PAC team at 703-907-5799 or by email at [pacteam@nreca.coop](mailto:pacteam@nreca.coop).*

## YES, I will support America's Electric Cooperatives PAC.

☐ I will make a one-time contribution of \$\_\_\_\_\_.

My check is enclosed. Make checks payable to REC Transmittal Account.

☐ I will contribute monthly. Please add \$\_\_\_\_\_ each month to my electric bill.

Name: \_\_\_\_\_

Address: \_\_\_\_\_

City: \_\_\_\_\_ State: \_\_\_\_\_ Zip: \_\_\_\_\_

Account #: \_\_\_\_\_ Email: \_\_\_\_\_

Signature: \_\_\_\_\_ Date: \_\_\_\_\_

Mail form to: ECI REC | PO Box 248 | Urbana, IA 52345

## MEMBERSHIP BENEFITS



Your Co-op Connections® Card offers you Healthy Savings and local and national deals. Use your card to start saving today! Questions? Email [coopconnections@ecirec.coop](mailto:coopconnections@ecirec.coop).



Use SmartHub to pay for FREE online! Visa, Discover, American Express, and MasterCard accepted. While you're there, view your monthly usage data in helpful chart formats.