

## LAST REMINDER

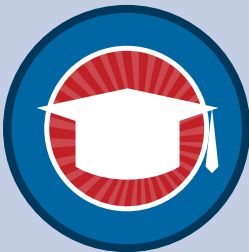
Apply now for a free trip to D.C. and \$1,000 scholarship!



### YOUTH TOUR 2024

Want to spend a week in Washington, D.C., this summer—for free? Apply for the Youth Tour, made possible by ECI REC! We'll send two students on this fun-filled week. Students must be in their sophomore or junior year of high school.

**APPLY BY WEDNESDAY, FEBRUARY 28.**



### SCHOLARSHIPS

ECI REC offers up to ten \$1,000 scholarships to students who will continue their education in college in any field. Up to two \$1,000 scholarships are also available to students accepted to the Powerline Technology program at Northwest Iowa Community College.

**APPLY BY WEDNESDAY, MARCH 6.**

Both Youth Tour and scholarship opportunities are available to students whose parents are members of ECI REC. [Readmoreaboutbothprogramsatecirec.coop](http://Readmoreaboutbothprogramsatecirec.coop).



## NEWLY REDESIGNED SMARTHUB

Save time and money by managing your account at anytime from anywhere.



Visit [ecirec.smarthub.coop](http://ecirec.smarthub.coop) for more information!

## SMARTHUB Is Simpler to Use!

SmartHub users will see a more user-friendly interface in early 2024!

- ✓ The technological foundation will not change—you'll be using the same bill payment tools.
- ✓ You'll have a simplified menu structure that will make it easier to navigate SmartHub and connect directly with ECI REC.
- ✓ Your usage and payment details will also be front and center for fast, easy access!

2400 Bing Miller Lane | PO Box 248 | Urbana, IA 52345-0248 | Toll Free: 877-850-4343  
Email: [ecirec@ecirec.coop](mailto:ecirec@ecirec.coop) | Web: [www.ecirec.coop](http://www.ecirec.coop) | [facebook.com/eastcentraliowarec](https://facebook.com/eastcentraliowarec)

East-Central Iowa Rural Electric Cooperative is an equal opportunity provider and employer.

# 3 FREE WAYS to Pay Your ECI REC Electric Bill

By going paperless, you'll not only make the world a little greener ... you'll keep more green in your pocket!



**ONLINE  
PAYMENT**  
(BANK ACCOUNT  
OR CREDIT CARD)

SmartHub is fast and safe! All you need is your account number (which can be found on your electric bill) and the last four digits of your Social Security number.



**ELECTRONIC  
DIRECT  
PAYMENT**  
(BANK ACCOUNT  
OR CREDIT CARD)

Make your payment easily and automatically each month by electronic direct payment.



**24-HOUR  
PAY-BY-  
PHONE**  
(CREDIT CARD)

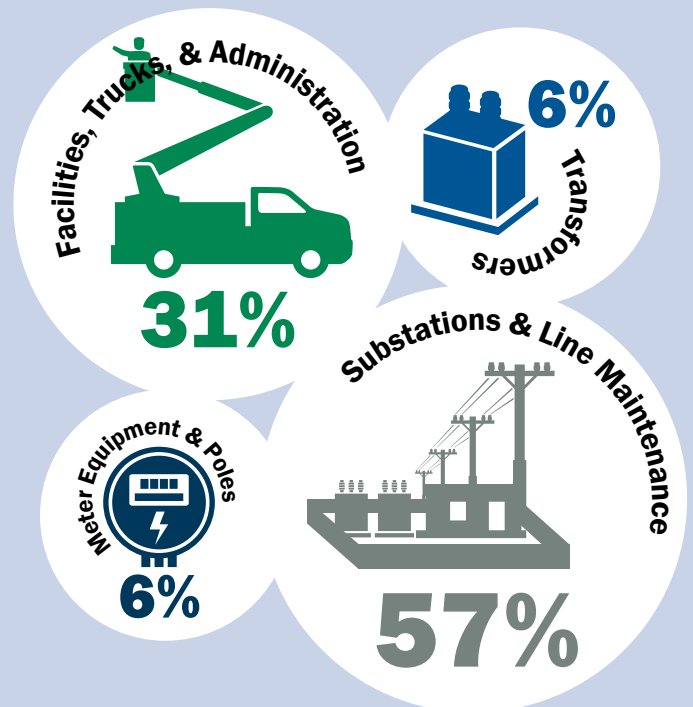
Make a payment any time, any day of the week, by calling our automated pay-by-phone system's toll-free number, 888-223-2048.

# What Does My FACILITY CHARGE COVER?

The flat monthly Facility Charge represents the fixed costs of making electricity available to your meter.

Whether a member uses 1 kWh of electricity or 1,000 kWh, the Cooperative still incurs the same cost to build the line, maintain the distribution system, and deliver the electricity.

## How the Facility Charge cost breaks down:



Source: ECI REC 2022 Cost-of-Service Study  
© 2024 East-Central Iowa REC

## MEMBERSHIP BENEFITS



Your Co-opConnections® Card offers you Healthy Savings and local and national deals. Use your card to start saving today! Questions? Email [coopconnections@ecirec.coop](mailto:coopconnections@ecirec.coop).



Use SmartHub to pay for FREE online! Visa, Discover, American Express, and MasterCard accepted. While you're there, view your monthly usage data in helpful chart formats.