

3 FREE WAYS to Pay Your ECI REC Electric Bill

By going paperless, you'll not only make the world a little greener ... you'll keep more green in your pocket!



ONLINE PAYMENT (BANK ACCOUNT OR CREDIT CARD)

SmartHub is fast and safe! All you need is your account number (which can be found on your electric bill) and the last four digits of your Social Security number.



ELECTRONIC DIRECT PAYMENT (BANK ACCOUNT OR CREDIT CARD)

Make your payment easily and automatically each month by electronic direct payment.



24-HOUR PAY-BY-PHONE (CREDIT CARD)

Make a payment any time, any day of the week, by calling our automated pay-by-phone system's toll-free number, 888-223-2048.

LAST REMINDER

Apply now for a free trip to D.C. and \$1,000 scholarship!



YOUTH TOUR 2023

Want to spend a week in Washington, D.C., this summer—for free? Apply for the Youth Tour, made possible by ECI REC! We'll send two students on this fun-filled week. Students must be entering their sophomore or junior year of high school.

**APPLY BY WEDNESDAY,
FEBRUARY 22.**



SCHOLARSHIPS

ECI REC offers up to ten \$1,000 scholarships to students who will continue their education in college in any field. Up to two \$1,000 scholarships are also available to students accepted to the Powerline Technology program at Northwest Iowa Community College.

**APPLY BY WEDNESDAY,
MARCH 1.**

Both Youth Tour and scholarship opportunities are available to students whose parents are members of ECI REC. Read more about both programs at ecirec.coop.

Scam Alert: Be Wary of Fraudulent Phone Calls

ECI REC members have received fraudulent calls in which the callers identified themselves as ECI REC employees. The callers told members they needed to pay their electric bills immediately, or they would be disconnected within the hour.

These calls did not come from ECI REC and serve as a reminder to all to be wary of phone scams. If you receive a call of this nature, do not give your personal information to the caller. Hang up and call our office directly to check the legitimacy of the call. ECI REC personnel will be able to provide members with specific account details, which scammers will not be able to do.

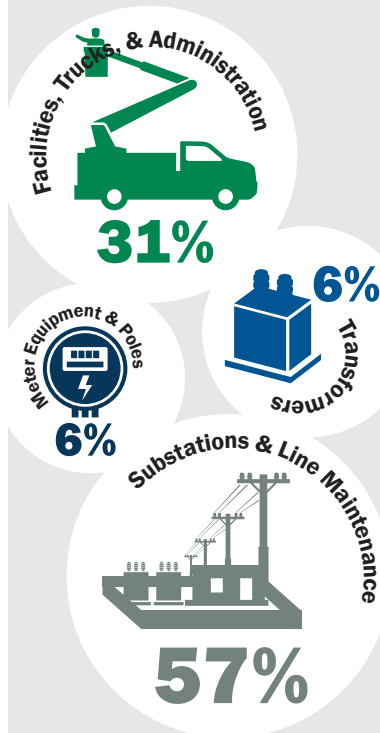


What Does My FACILITY CHARGE Cover?

The flat monthly Facility Charge represents the fixed costs of making electricity available to your meter.

Whether a member uses 1 kWh of electricity or 1,000 kWh, the Cooperative still incurs the same cost to build the line, maintain the distribution system, and deliver the electricity.

How the Facility Charge cost breaks down:



Source: ECI REC 2022 Cost-of-Service Study
© 2023 East-Central Iowa REC

2023 Energy Efficiency Rebates Are Here

Don't forget about ECI REC's energy efficiency rebate programs! As a Cooperative member-consumer, these incentives are right at your fingertips!

NEW EQUIPMENT/APPLIANCE INCENTIVES

Air-Source Heat Pump, Including Mini-Splits

- » Cold Climate Heat Pump: \$350/ton
- » Standard Air-Source Heat Pump: \$250/ton
- » Hybrid Air-Source Heat Pump Bonus: \$50/ton

Ground-Source Heat Pump

- » Closed-Loop System: \$450/ton
- » Open-Loop System: \$300/ton (no "pump & dump" systems)
- » Hybrid System with Gas Backup: Additional \$50/ton
- » Unit Replacement: \$150/ton

ENERGY STAR® Central Air Conditioning

- » ENERGY STAR-Qualified: \$100/unit (min. SEER 15.0 & EER 12.5)
 - Limit two A/C rebates per account.

Indoor Air Quality

- Equipment must serve the entire conditioned space of the home.
- » Energy/Heat Recovery Ventilator (ERV/HRV): \$250/unit
 - Limit two HRVs per account.

Heat Pump Water Heater (HPWH)

- » ENERGY STAR Integrated Unit: \$500/unit

High-Efficiency Electric Water Heater

- » Electric Resistance Unit: \$75/unit (40 gal. tank min., EF \geq 0.90)
- » Geothermal Assisted Storage Unit: \$150/unit (40 gal. tank min., EF \geq 0.90)

Beneficial Electrification (BE) Incentive

Available when a resistance or HPWH unit is replacing a natural gas or LP unit, or for new accounts.

- » Go-Electric Bonus: \$100

ENERGY STAR-Qualified Appliances

- » ENERGY STAR Clothes Washer: \$40/unit (must have electric water heater)
- » ENERGY STAR Electric Clothes Dryer: \$20/unit

Electric Vehicle Chargers

- The primary charging location of the vehicle must be at the home address of the member served by ECI REC. Account must be on time-of-use rate to be eligible.
- » Level II Charger (240/208-Volt Input Supply) Installation: 50% up to \$500

VISIT ECIREC.COOP TO SEE WEATHERIZATION AND NEW HOME CONSTRUCTION REBATES.

Please note: Additional qualifications apply to many of these rebates. Complete requirements can be found on the rebate forms, so it's wise to review these before you shop.

MEMBERSHIP BENEFITS



Your Co-op Connections® Card offers you Healthy Savings and local and national deals. Use your card to start saving today! Questions? Email coopconnections@ecirec.coop.



Use SmartHub to pay for FREE online! Visa, Discover, American Express, and MasterCard accepted. While you're there, view your monthly usage data in helpful chart formats.