

APRIL 2022

## smart corner

### Take control of your ECI REC account.

Get registered on the SmartHub member portal:  
<https://ecirec.smarthub.coop/Login.html#>.

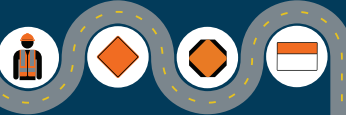


Scan to access the member portal from your smartphone.



#### NATIONAL WORK ZONE AWARENESS WEEK 2022

#### WORK ZONES ARE A SIGN TO SLOW DOWN



Work zone crashes killed 762 people in 2019, including 135 roadway workers. Most of the people killed were drivers and their passengers. So slow down and stay alert as you approach and pass by a work zone. Help spread the word during National Work Zone Awareness Week, April 11-15.

## Air-Source Heat Pumps: A Good Fit for ECI REC Members



Standard pad-mount heat pump



Mini-split heat pump

### WHAT IS AN AIR-SOURCE HEAT PUMP?

An air-source heat pump can provide efficient heating and cooling for your home. When properly installed, it can deliver one-and-a-half to three times more heat energy to a home than the electrical energy it consumes. How? A heat pump moves heat rather than converting it from fuel like combustion heating systems do.

Air-source heat pumps have been used for many years in nearly all parts of the United States, but they weren't previously an option in areas with extended periods of subfreezing temperatures. However, in recent years, air-source heat pump technology has advanced, and it is now a legitimate space heating alternative in colder regions.

### SELECTING A HEAT PUMP

First, consider an ENERGY STAR® rated unit, which means it uses less energy than conventional models.

You also need to know what to look for on the black-and-yellow EnergyGuide sticker.

- Heating efficiency for air-source heat pumps is indicated by the heating season performance factor (HSPF).
- Cooling efficiency is indicated by the seasonal energy efficiency ratio (SEER). The higher HSPF and SEER the more efficient the system is.

Despite the higher initial cost, an ENERGY STAR® rated air-source heat pump that replaces an older unit, will use less energy, cutting heating and cooling costs. The energy savings these units deliver, can return the higher initial investment several times during the heat pump's life.

### ECI REC AIR-SOURCE HEAT PUMP REBATES

- Standard Air-Source Heat Pump: \$200/ton
- Hybrid Air-Source Heat Pump Bonus: \$50/ton
- ENERGY STAR Bonus: \$200/unit
- Cold Climate Heat Pump: \$350/ton

For detailed requirements, see the terms and conditions of the rebate form.

Source: [energy.gov](http://energy.gov)

# Plant the Right Tree in the Right Place

As the snow melts and spring arrives, landscaping season follows. If you're adding trees this year, consider your power lines. The wrong tree in the wrong place can be a hazard.

For more tips on smart tree planting in your community, contact your local electric cooperative or visit [www.ArborDay.org](http://www.ArborDay.org).

Happy Arbor Day!  
Friday,  
April 29

April  
Is Safe  
Digging  
Month!

Be Safe. Always call 811 before you dig to locate any buried utility lines.



Know what's below.  
Call before you dig.

## LARGE TREES

Height/spread of more than 40 feet, such as:

- Maple
- Birch
- Oak
- Sweetgum
- Spruce
- Linden
- Pine

## MEDIUM TREES

Height/spread of 25 to 40 feet, such as:

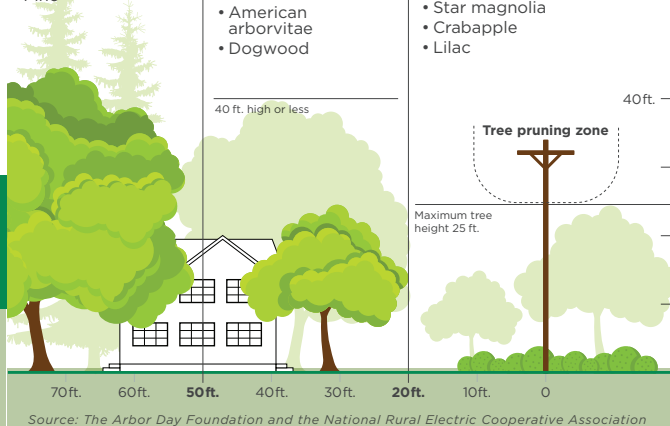
- Washington hawthorn
- Goldenrain tree
- Eastern redbud
- American arborvitae
- Dogwood

## SMALL TREES

Avoid planting within 20 feet of power lines. When planting within 20 feet is unavoidable, use only shrubs and small trees.

Height/spread of no more than 25 feet, such as:

- Star magnolia
- Crabapple
- Lilac



## ECI REC AWARDS SCHOLARSHIPS TO HIGH SCHOOL SENIORS

East-Central Iowa REC is proud to announce we have awarded \$1,000 scholarships to 12 graduating seniors who plan to further their education in a diverse range of programs. Congratulations to these deserving students!



**Kirby Cook**

East Buchanan

Parents: Aaron and Patricia Cook, Winthrop  
Iowa State University, Agricultural Studies



**Mackenzie Curtis**

Starmont

Parents: Chris and Tracy Curtis, Aurora  
Cornell College, Pre-Med



**Emma Demuth**

Center Point-Urbana

Parent: Julie Demuth Jayne, Urbana  
University of Iowa, Neuroscience



**Andrea Dvorak**

North Tama

Parents: Joseph and Jennifer Dvorak, Clutier  
Central College, Education



**Lauren Hamilton**

Oelwein

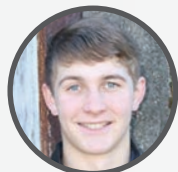
Parent: Lisa Hamilton, Oelwein  
Kirkwood Community College, Liberal Arts



**Gabe Hanson**

Union

Parents: Robert and Maureen Hanson, LaPorte City  
Lake Land College, Agricultural Education



**Kaden Kingsbury**

Vinton-Shellsburg

Parent: Matt Kingsbury, Vinton  
Des Moines Area Community College, Engineering



**Lance Miller**

North Linn

Parents: Daniel and Megan Miller, Walker  
Iowa State University, Kinesiology



**Laura Smith**

Independence

Parents: Eric and Catherine Smith, Independence  
New York University, Business and Marketing



**Alex Ludeking**

Benton Community

Parents: George and Theresa Ludeking, Norway  
Iowa State University, Aerospace Engineering



**Bowen Munger**

Starmont

Parent: Jake Munger, Arlington  
Northwest Iowa Community College, Powerline Technology



**Philip Sommerfelt**

Jesup

Parents: Lelann and Machelle Sommerfelt, Jesup  
Hawkeye Community College, Diesel Tech

## MEMBERSHIP BENEFITS



Your Co-op Connections® Card offers you Healthy Savings and local and national deals. Use your card to start saving today! Questions? Email [coopconnections@ecirec.coop](mailto:coopconnections@ecirec.coop).



Use SmartHub to pay for FREE online! Visa, Discover, American Express, and MasterCard accepted. While you're there, view your monthly usage data in helpful chart formats.