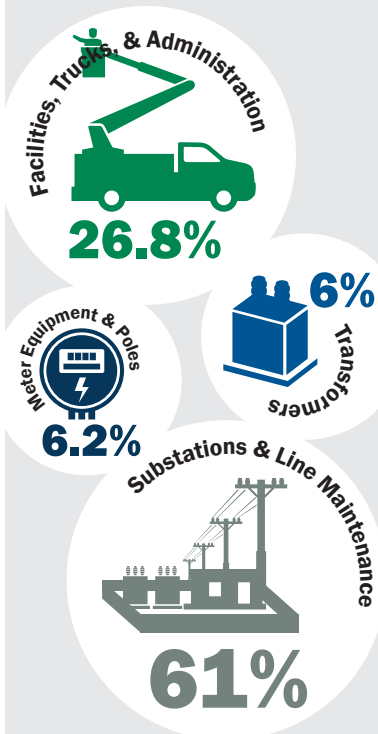


What does my FACILITY CHARGE cover?

The flat monthly Facility Charge represents the fixed costs of making electricity available to your meter.

Whether a member uses 1 kWh of electricity or 1,000 kWh, the Cooperative still incurs the same cost to build the line, maintain the distribution system, and deliver the electricity.

How the Facility Charge cost breaks down:



Source: ECI REC 2020 Rate and Cost of Service Study © 2020 East-Central Iowa REC

Understanding Your Bill

A sample ECI REC bill is shown below, with notes to help you understand each piece.

1. Your account number is easy to see in three locations: at the top of the page, above the meter data, and above the rate data.
2. The message box has communications about ECI REC events, programs, and alerts.
3. Temperature averages for the billing period and for the same period the previous year.
4. Itemized and unbundled rates and fees.
5. A clear breakdown of the amount due both prior to and after the due date.
6. Two of your six payment options.
7. A QR code: Scan it with an app on your smartphone to be connected with our website.

ECIREC
Energy Wise, Community Connected
A Touchstone Energy® Cooperative

P.O. Box 248
Urbana IA 52345-0248

Email: csr@ecirec.coop
Toll-free: 877-850-4343

5419 1 AV 0.378
EAST CENTRAL IOWA
2400 BING MILLER LN
URBANA IA 52345

5 5419
C-18 P-19

Statement Date	05/11/2021
Account Number	1 1234567
Payment Due	06/01/2021

Service Summary

Previous Balance	\$232.32
Payment Received 04/29/2021	-232.32
Balance Forward	\$0.00
Current Charges	\$199.63
Total Amount Due	\$199.63

2 Message from ECI REC

1 Account Number 1234567

Main Meter No.	Services From	To	Days	Readings Previous	Present	Meter Multiplier	kWh Usage	Rate Number and Description	Bill Type	911 Address and Map Location
12 345 678	03/28/2021	04/29/2021	32	8117	8192	20.00	1500	31 FARM AND RESIDENTIAL	Regular	2400 BING MILLER LN 137B 33 2

Phone #: (000) 000-0000

kWh Usage History

PERIOD ENDING	04/29/2020	04/29/2021
Avg Daily Temp	49	49
Avg Daily kWh	28	47
Avg Daily Cost	\$4.19	\$5.88

3

4 Current Service Detail

Balance Forward	\$0.00
Facility Charge	\$36.50
kWh Charges	\$105.00
500 kWh @ 0.093	\$46.50
County Tax	\$1.88
Total Electric Charges	\$189.88
Security Light	\$9.75
Other Services & Credits	\$9.75
Total Electric, Other Services & Credits	\$199.63
Total Amount Due 06/01/2021	\$199.63
\$2.99 (1.5%) late charge applies after 06/01/2021	\$202.62

5

6 > Pay your bill online at ecirec.smarthub.coop or call ECI REC's Pay-By-Phone toll-free number 888-223-2048.
> ECI REC's Online Account Portal gives you account access 24/7.

7 Scan and go to: ecirec.coop

To comply with industry standards card payments need to be processed by the member through ECI REC's Pay-By-Phone system or Online Account Portal.

KEEP
SEND Please do not staple or paperclip.
Comments/Address Change: _____

Account Number 1234567 **1**
Total Due 06/01/2021 \$199.63
After 06/01/2021 Pay \$202.62

EAST CENTRAL IOWA
2400 BING MILLER LN
URBANA, IA 52345

EAST-CENTRAL IOWA RURAL
ELECTRIC COOPERATIVE
PO BOX 248
URBANA IA 52345-0248

3 FREE WAYS to Pay Your ECI REC Electric Bill

By going paperless, you'll not only make the world a little greener ... you'll keep more green in your pocket!



ONLINE PAYMENT (BANK ACCOUNT OR CREDIT CARD)

SmartHub is fast and safe! All you need is your account number (which can be found on your electric bill) and the last four digits of your social security number.



ELECTRONIC DIRECT PAYMENT (BANK ACCOUNT OR CREDIT CARD)

Make your payment easily and automatically each month by electronic direct payment.



24-HOUR PAY-BY-PHONE (CREDIT CARD)

Make a payment any time, any day of the week, by calling our automated pay-by-phone system's toll-free number, 888-223-2048.

Scam Alert: Be Wary of Fraudulent Phone Calls

In December and January, several ECI REC members received fraudulent calls in which the callers identified themselves as ECI REC employees. The callers told members they needed to pay their electric bills immediately, or they would be disconnected within the hour.

These calls did not come from ECI REC and serve as a reminder to all to be wary of phone scams. If you receive a call of this nature, do not give your personal information to the caller. Hang up and call our office directly to check the legitimacy of the call. ECI REC personnel will be able to provide members with specific account details, which scammers will not be able to do.



LAST REMINDER

Apply now for free trip to D.C. and \$1,000 scholarship!



YOUTH TOUR 2022

Want to spend a week in Washington, D.C., this summer—for free? Apply to attend the Youth Tour, made possible by ECI REC. We'll send two area juniors to this fun-filled week.

**APPLY BY WEDNESDAY,
FEBRUARY 23.**



SCHOLARSHIPS

ECI REC offers \$1,000 scholarships to up to ten students to continue their education in any field, plus up to two additional \$1,000 scholarships for those pursuing a career as a lineworker.

**APPLY BY WEDNESDAY,
MARCH 2.**

Both Youth Tour and scholarship opportunities are available to students whose parents are members of ECI REC. Read more about both programs at ecirec.coop.

MEMBERSHIP BENEFITS



Your Co-op Connections® Card offers you Healthy Savings and local and national deals. Use your card to start saving today! Questions? Email coopconnections@ecirec.coop.



Use SmartHub to pay for FREE online! Visa, Discover, American Express, and MasterCard accepted. While you're there, view your monthly usage data in helpful chart formats.