



Photo credit: Touchstone Energy

State Releases 2022-2023 LIHEAP Requirements

THE 2022-2023 Low-Income Home Energy Assistance Program (LIHEAP) helps qualifying low-income Iowa homeowners and renters pay for a portion of their primary heating costs for the winter heating season. The assistance is based on household income, household size, type of fuel, and type of housing.

If you are not sure where to apply, dial 211 or visit <https://humanrights.iowa.gov/dcaa/where-apply> to contact your local community action agency.

You may also write to: **LIHEAP, Iowa Department of Human Rights, Capitol Complex, Des Moines, IA 50319.** 

HOW TO APPLY FOR LIHEAP

WHEN TO APPLY

- » Elderly (60 and over) and/or disabled: October 1, 2022, to April 30, 2023
- » All other households: November 1, 2022, to April 30, 2023

WHAT TO TAKE

- » Proof of income for all household members age 18 and over; depending upon your household income type, income documentation from the past 30 days, the last 12 months, or the last calendar year—which ever is easier or more beneficial for you
- » Proof of Social Security Numbers for all household members (documentation required)
- » Most recent heat bill
- » Most recent electric bill

WAGE EARNERS

Please bring copies of your check stubs for the 30-day period preceding the date of application, or a copy of your most recent federal income tax return.

FIXED INCOME

This income may include: Social Security Benefits, Supplemental Security Income, Veteran's Assistance, Unemployment Insurance, and pensions. Please bring copies of your check stubs from the previous 30 days.

SELF-EMPLOYED/FARMERS

Please bring a copy of your most recent federal income tax return.

If you receive alimony or child support, it will also need to be verified. Additional income not listed here may be required.

INCOME MAXIMUMS

Household Size	Annual Gross Income
1	\$27,180
2	\$36,620
3	\$46,060
4	\$55,500
5	\$64,940
6	\$74,380
7	\$83,820
8	\$93,260

For households with more than eight members, add \$9,440 for each additional member.

Members Save With ECI REC Weatherization Incentives

Requirements (with or without LIHEAP)

- » Must have electric heat and/or central air (homes with natural gas do not qualify).
- » Home must be built prior to 2000.
- » Must be upgrade to existing home (new additions do not qualify).
- » Project cost must be \$150 or more (labor costs for self-installed projects cannot be included).

Electric Heat (with or without air conditioning)

- » Attic/Ceiling Insulation - 60% up to \$600
 - » Wall Insulation - 60% up to \$600
 - » Foundation Insulation - 60% up to \$600
 - » Infiltration Control - 60% up to \$200
 - » Duct Insulation/Sealing - 60% up to \$200
- Maximum rebate per home: \$2,200*

Central AC Only (non-electric heating)

- » Attic/Ceiling Insulation - 15% up to \$150
 - » Wall Insulation - 15% up to \$150
- Maximum rebate per home: \$300*

LIHEAP QUALIFIED

(See LIHEAP weatherization income guidelines to the left)

Electric Heat (with or without air conditioning)

- » Attic/Ceiling Insulation - 80% up to \$800
- » Wall Insulation - 80% up to \$800
- » Foundation Insulation - 80% up to \$800
- » Infiltration Control - 80% up to \$200
- » Duct Insulation/Sealing - 80% up to \$200

Maximum rebate per home: \$2,800

Central AC Only (non-electric heating)

- » Attic/Ceiling Insulation - 20% up to \$150
 - » Wall Insulation - 20% up to \$150
- Maximum rebate per home: \$300*

RECare Supports Members in Need



Contributing to RECare is one easy way to help your fellow members! The program distributes funds to low-income energy consumers in Benton and Buchanan Counties via community action agencies. Donations help pay these members' heating bills or weatherization costs.

To sign up for RECare or make a one-time donation, call **877-850-4343** or fill out and return the form to the right or at **ecirec.coop** (under Account Services, Member Programs, RECare Program).



Scan to fill out form online.

YES, I want to contribute to RECare.

- I will make a one-time contribution to RECare.
- I will contribute \$_____ per month to RECare. (I understand that this amount will be automatically added to my monthly electric bill.)
- My check is enclosed. (Make payable to ECI REC.)

Name: _____

Address: _____

City: _____ State: _____ Zip: _____

Account Number: _____

Email Address: _____

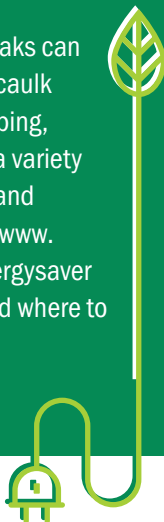
Mail form to: ECI REC | Billing | PO Box 248 | Urbana, IA 52345-0248

Energy Efficiency Tip of the Month

With winter weather on the way, now is the time to seal drafty windows. If you can see daylight around a window frame or if you can rattle a window (movement means possible leaks), the window likely needs to be sealed.

Most window leaks can be sealed with caulk or weatherstripping, which come in a variety of compounds and materials. Visit www.energy.gov/energysaver to learn how and where to seal air leaks.

Source: [energy.gov](http://www.energy.gov)



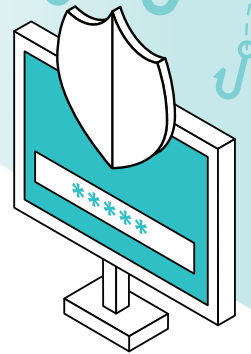
See Yourself in Cyber.

October is Cybersecurity Awareness Month

Cyber criminals are here to stay. But when we all take a risk-based approach to our cyber behavior, we create a safer internet for everyone. Visit www.staysafeonline.org for additional cybersecurity tips.

Improve your cyber hygiene by doing these four things:

1. Enable multi-factor authentication
2. Use strong passwords and a password manager
3. Update software regularly
4. Recognize and report phishing attacks



Discover the Value of Co-Op Connections®

Save big and enjoy more with your Co-op Connections Card! Online and in-store savings are available from local and national retailers.

- » Emmy Lou Candles
- » Polar Blair's Den
- » Cy & Charley's Tire & Appliances
- » E & T NAPA Auto Parts
- » Fabulous Fridays
- » Heartland Acres Agribition Center
- » Cameron Clothing Company
- » Michael & Dowd
- » Styles Unlimited
- » Berry's Lanes, Inc.
- » In the Country Garden & Gifts
- » Frazier Nursery
- » Henkle Creek Mercantile
- » Subway (Vinton)
- » Viking Sewing Center
- » The NEWS/Buchanan County Review

Download the mobile app to use your card via your smartphone!

Apple

Android



Photo credit: Touchstone Energy

MEMBERSHIP BENEFITS



Your Co-op Connections® Card offers you Healthy Savings and local and national deals. Use your card to start saving today! Questions? Email coopconnections@ecirec.coop.



Use SmartHub to pay for FREE online! Visa, Discover, American Express, and MasterCard accepted. While you're there, view your monthly usage data in helpful chart formats.