

Building on the Past  
to Grow the Future

# Log in to ECI REC's Virtual Annual Meeting

*a Cooperative Difference feature*



We would also like to highlight the efforts of our Nominating Committee, who met on February 20. This committee made this election possible. Thank you to the following (pictured left to right): Gary Maurer (District 9), Carl Dodge (District 10), Don Shonka (District 6), John Frazier (District 4; virtual), Peggy Bearbower (District 2), Randy Merkel (District 8), and Clint Sandburg (District 3). Bob Hanson (District 1) is not pictured.

**IT'S TIME TO VOTE!** ECI REC's Board election will get underway on May 19, when voting opens. Voting will remain open until June 23. Results will be announced at this year's Annual Meeting of the Members, which will be held virtually via Zoom on Wednesday, June 25.

In today's challenging environment, cooperative leaders carry a significant responsibility. Over the past year,

we've been reminded how incredibly essential our utilities are. ECI REC is blessed to have a dedicated Board of Directors that supports innovation that builds on our past to grow our future.

"Members, your vote matters! Though we no longer gather in person, we offer an extended voting window, and members have three ways to cast their ballots," said CEO Teresa

Floyd. "We hope you'll join us for our livestream and take part in guiding our Cooperative's future!"

We've created a page on our website dedicated to the Annual Meeting. Look for the yellow button at the top of the home page at [ecirec.coop](https://ecirec.coop). For more detailed information on how to attend the meeting, how to vote, and this year's prizes, see the back cover. 📖

## 2024 President & CEO Report

**WITH GRATITUDE** for our achievements and milestones, we can say 2024 was indeed a remarkable year for your Cooperative—filled with historically low outages, as well as strategic investments in our infrastructure, maintenance, and employees.

Global supply chain issues continued to improve, and lead times on most line materials improved as well. Connecting with local legislators remains very important for ECI REC's leaders, so there is an intentional effort on our behalf to reach out to our senators and representatives to inquire about get-to-know visits at the ECI REC administrative headquarters. It's essential that our legislators can count on ECI REC for credible information!

Let's take a moment to reflect on the successes of 2024 and share our vision for 2025.

### Safety

Safety is a cornerstone of your Cooperative's operations and requires commitment at all levels. It's not just about ensuring compliance with regulations but also fostering a culture that prioritizes the well-being of employees and the community. The safety of our employees, members, and the public is our number-one priority. We continue to participate in ongoing education programs, conferences, and in-house training that's available to all Cooperative employees. We also conduct monthly safety meetings with the assistance of the Iowa Association of Electric Cooperatives (IAEC), which provides annually required training and other safety-related training to ECI REC.



**STEVE RAU,**  
President



**TERESA FLOYD,**  
CEO

*continued on page 8*

# 2024 President & CEO Report

*continued from page 7*

We also participate in the NRECA's Rural Electric Safety Achievement Program (RESAP). In 2024, your Cooperative successfully completed the assessment and was awarded the Certificate of Safety Achievement. The over 200-point checklist included in the assessment revealed that we have no areas of critical concern, receiving exceeding expectations or satisfactory scores. One notable highlight was that ECI REC had zero employee lost time or vehicle accidents for five consecutive years (2019–2023). In 2024, your Cooperative reached more than 400,000 hours of work without a lost time accident.

These achievements underscore our steadfast dedication to maintaining a safe and secure work environment for each member of the ECI REC family. Our employees' unwavering commitment to safety ensures their own well-being and that of their colleagues. For that, we extend our deepest gratitude. Let's continue to uphold our commitment to safety as we work together toward even greater achievements in the coming year!

## Keeping the Lights On

One of the key highlights of 2024 was a record-low outage total of 21.5 average minutes per member-account. (For perspective, the previous record was set in 2023, and it was 28.2 minutes!) This number is based on the outages we could control. It does not include planned or scheduled outages or outages caused by the public or power supplier.

Our continued investment in plant upgrades, proactive maintenance program, and good weather played a big part. Crews were busy replacing aged poles, changing out oil circuit reclosers with electronic reclosers, installing new services for members, and working on other maintenance projects. Contractors inspected approximately 6,300 poles and 1,030 pieces of underground equipment at 4 of our 35 substations. Contractors also carried out the Cooperative's vegetation management program throughout 376 miles of line in the Walker, Jesup, Shady Grove, and Van Horne substation areas.

As part of our overhead Work Plan projects, our contractor replaced approximately 31 miles of older conductor and poles in the Bryantsburg, Rowley, Shellsburg, Van Horne, and Homer substation areas, strengthening our infrastructure and providing more capacity for our distribution system.

Remotely controlled switches were added to five of our substations to help cut down on outage response times. During an outage, these remote switches will allow us to backfeed circuits that are without power and feed them from other substations that are still energized. They are also used

when a substation must be deenergized for maintenance. This can all happen remotely through our SCADA system.

## Cooperative Difference

Unlike investor-owned utilities that maximize profits to pay dividends to shareholders, not-for-profit electric cooperatives like ECI REC provide members with "at cost" electric service. At the end of the year, after all operational expenses have been covered, a portion of any excess funds is allocated back to our members in the form of capital credits. With a positive outlook for 2024, your Board of Directors elected to retire over \$600,000 in patronage dividends. Over 64% of the retirement was returned to current members via credit on their June 2024 energy bills.

We continue to foster a culture of excellence and continuous improvement for our 34 employees, who have 613 combined years of service. In 2024, we invested over 2,573 hours in employee development. We also invested in invaluable education and training for your eight Board directors, helping them make informed decisions as they determine the strategic direction and priorities of your Cooperative. Four ECI REC directors have received Credentialed Cooperative Director Certificates. Three of these four have also obtained Board Leadership and Director Gold Certificates.

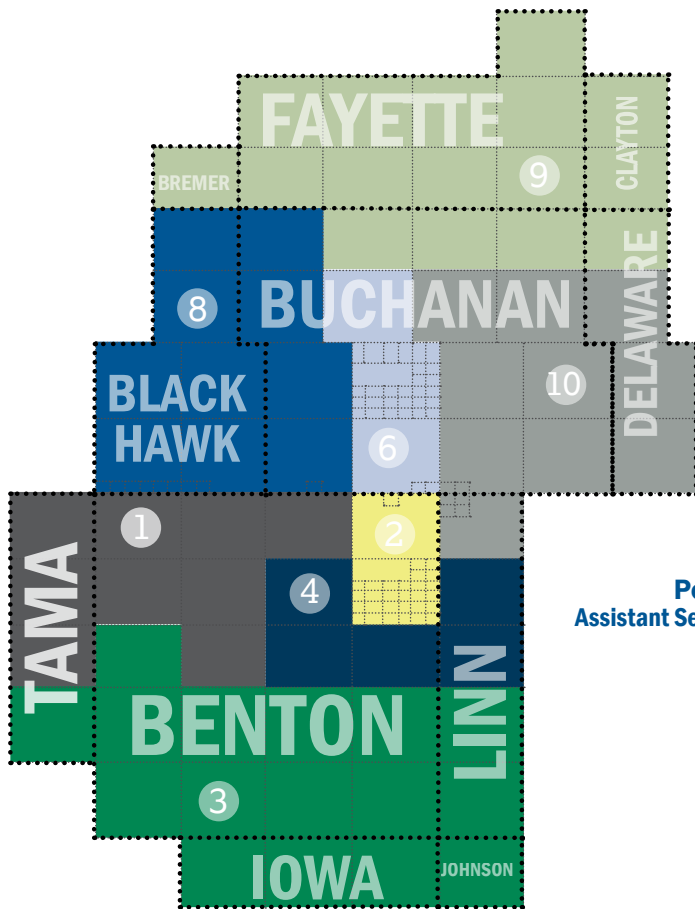
Finally, in 2024 we updated our survey format, making the new survey available to all members, all the time. We understand you are busy and receive many solicitations for your opinion. With that in mind, we've kept the survey questions short, and there is a comments section for your feedback. Your input is invaluable to us; your feedback will guide our efforts and ensure we continue to meet your needs.

## Commitment to Community

In 2024, we participated in two Junior Achievement curriculum presentations at local elementary schools. We also awarded \$1,000 scholarships to 12 graduating seniors at 11 different high schools. We sponsored two high school students on the 2024 Iowa Youth Tour, an all-expense week-long trip to Washington, D.C.

In June, Line Foreman Brian Reidy traveled to Guatemala with 13 other lineworkers from Iowa and Minnesota electric cooperatives. They volunteered with an international project affiliated with the NRECA, with a goal of bringing electricity and clean water filtration to the village of Las Penas, which sits at an elevation of approximately 6,000 feet and is made up of about 35 homes scattered on the crests and flat areas of the mountainside. Crews helped build more than three miles of power lines and wired homes for electric service.

# Your District Map & Board of Directors



**Jeff Elliott**  
Vice President  
Director since 1990  
Board District 1



**Julie Kester**  
Secretary/Treasurer  
Director since 2019  
Board District 2



**Brian McNulty**  
Director since 2021  
Board District 3



**Gary McKenna**  
Director since 2016  
Board District 4



**Pete Burmeister**  
Assistant Secretary/Treasurer  
Director since 2024  
Board District 6



**Nick Donlea**  
Director since 2018  
Board District 8



**Steve Rau**  
President  
Director since 2005  
Board District 9



**Gary Cook**  
Director since 2024  
Board District 10



## 2024 President & CEO Report continued from page 8

ECI REC had a great time at the Benton and Buchanan County Fairs in 2024. We contributed \$1,026 to the county Cattlemen's Associations, Pork Producers, and Dairy Producers through vouchers for pork and beef burgers and ice cream cones. We brought a "live line" trailer for lineworkers to perform demonstrations on the hazards of overhead power lines. We also passed out 200 swag bags and 196 toy hard hats to fairgoers, and 10 lucky members who visited our booth received a \$50 electric bill credit.

We celebrated two local volunteers—Michael Kramer of Vinton and Yvette Vogel of Jesup—who were nominated in the Shine the Light contest by making a monetary contribution to their individual community causes.

### Looking Out for You

Iowa's electric cooperatives regularly coordinate meetings with state and federal legislators through the IAEC. During

the week of September 23, approximately 20 electric cooperative representatives traveled to Washington, D.C. These advocates were able to meet with every member of the Iowa congressional delegation.

### Looking Ahead to 2025

ECI REC has already started working toward a great 2025. As soon as the new year began, our crews were busy designing and staking projects, replacing poles, doing annual line inspections, and working on other maintenance projects. Our overhead construction contractor has begun work to replace 22–25 miles of older line with new conductor and poles, which is one of the 2025 Work Plan projects. Our tree contractor has begun trimming trees. Pole inspections and underground Work Plan projects are in motion and will continue throughout the remainder of the year. 🌱



# Financials

## STATEMENT OF REVENUE AND EXPENSE

REVENUE	2024	2023
Operating Revenue and Patronage Capital .....	\$25,734,523	\$25,644,490
<b>EXPENSE</b>		
Purchased Power .....	\$13,495,724	\$13,883,043
Distribution Expenses - Operations .....	\$2,702,577	\$2,631,241
Distribution Expenses - Maintenance .....	\$649,953	\$614,502
Customer Accounts Expense .....	\$514,353	\$488,563
Customer Service and Informational Expense .....	\$522,158	\$608,887
Administrative and General Expense .....	\$1,611,213	\$1,528,667
Depreciation .....	\$2,840,973	\$2,690,219
Taxes - Property and Other .....	\$0	\$(21,608)
Interest on Long-Term Debt .....	\$1,753,604	\$1,556,840
Other Deductions and Interest Expense .....	\$60,819	\$91,891
<b>Total Expense .....</b>	<b>\$24,151,374</b>	<b>\$24,072,245</b>
Operating Margins .....	\$1,583,149	\$1,572,245
Non-Operating Margins .....	\$121,744	\$91,870
Generation and Transmission Capital Credits .....	\$1,125,007	\$994,801
Other Capital Credits and Patronage Dividends .....	\$255,082	\$290,271
<b>Total Operating and Non-Operating Margins .....</b>	<b>\$3,084,982</b>	<b>\$2,949,187</b>

## BALANCE SHEET

ASSETS	2024	2023
Current Assets and Other Debits .....	\$16,974,520	\$15,442,326
Fixed Assets (Net Utility Plant) .....	\$74,719,608	\$71,556,945
Total Assets and Other Debits .....	\$91,694,128	\$86,999,271

### LIABILITIES

Total Current and Accrued Liabilities .....	\$4,487,835	\$4,359,605
Total Fixed Long-Term Debt and Deferred Credits .....	\$42,656,862	\$40,476,868
Total Margins and Equities .....	\$44,549,431	\$42,162,798
<b>Total Liabilities and Other Credits .....</b>	<b>\$91,694,128</b>	<b>\$86,999,271</b>

### COMPARATIVE OPERATING STATISTICS

Miles of Line Energized .....	2,301	2,298
New Services Connected .....	85	100
Total Services in Place .....	9,900	9,869
kWhs Purchased From CIPCO .....	224,030,543	228,723,401
Cost Power Purchased .....	13,475,292	13,861,698
Percent Line Loss .....	4.42%	4.42%

### OPERATING REVENUE

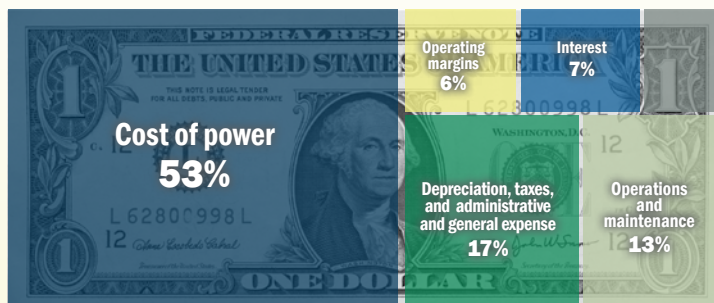
Average kWh Used per Month per Consumer .....	\$25,680,991	\$25,576,250
Average Monthly Bill .....	2,024	2,073
Average Monthly Bill .....	\$232.01	\$231.77
Average Cost per kWh to Consumer .....	\$0.1146	\$0.1118

### LOAN FUNDS

CFC .....	\$41,317,748	\$39,127,754
Other .....	\$629,916	\$678,319
<b>Total Loan Funds .....</b>	<b>\$41,947,664</b>	<b>\$39,806,073</b>

## 2024 REC DOLLARS AT WORK FOR YOU

Consumer accounts, service,  
and information  
4%



# \$5.51

The average our residential  
members spend per  
day on electricity.

ECI REC IS AMONG IOWA'S  
**LOWEST  
RATES**  
for cooperative residential electricity.



**11,372** AMI meters  
AT WORK SERVING  
**7,264** memberships  
**9,224** member accounts

## Invested in Efficiency

# \$0.00070327

per kWh

of 2024 revenue  
invested in energy  
efficiency programs

# \$44,666

 donated to **43** causes

# \$12,000

(via \$1,000  
scholarships)  
to **12** graduating  
seniors

# \$6,775

to Youth Tour

# \$4,000

to health/safety  
organizations

# \$15,850

(including \$5,000 to  
Little Knights Learning Center)

to local/county  
economic development

# \$4,291

to community organizations

# \$1,750

to school functions

## 2024 CONSTRUCTION WORK PLAN ACTUALS

31.1 miles of line replacement .....	<b>\$2,092,822</b>
Pole, equipment, and conductor replacement .....	<b>\$1,397,620</b>
New transformers, meter, and special equipment .....	<b>\$384,517</b>
SCADA technology .....	<b>\$98,252</b>
Sectionalizing equipment .....	<b>\$178,589</b>
Service upgrades .....	<b>\$792,395</b>
New service construction .....	<b>\$187,653</b>
Outdoor lights .....	<b>\$25,694</b>
Substation investment .....	<b>\$69,065</b>

# 2024 ECI REC Year-End Stats



**4,010**

REGISTERED SMART  
HUB USERS

**2,360**

AVERAGE MONTHLY  
MOBILE/ONLINE  
PAYMENTS

**1,294**

EBILL (PAPERLESS)  
MEMBER-ACCOUNTS

**2024 \$602,382**

**2023 \$453,324**

**2022 \$456,041**

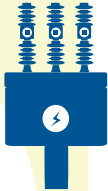
## 3-YEAR PATRONAGE HISTORY

## COOPERATIVE PRINCIPLES

1. Open and Voluntary Membership
2. Democratic Member Control
3. Members' Economic Participation
4. Autonomy and Independence
5. Education, Training, and Information
6. Cooperation Among Cooperatives
7. Concern for Community

ECI REC  
owns and  
maintains

**24**  
substations



Empowering  
Energy Savings

**\$83,903**

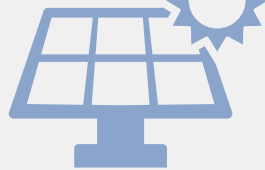
in energy efficiency rebates  
to ECI REC members

**402,542 kWh**

energy saved by  
ECI REC members  
through energy  
efficiency  
rebates



**94**



**interconnected**

member-owned  
onsite generation facilities

HELPING MEMBER  
FAMILIES IN NEED

**62** members  
gave **\$7,313**



**CARE with  
RECare**

## YOUR BOARD

**Board District 1 - Jeff Elliott**

2024/2025 Vice President

**Board District 2 - Julie Kester**

2024/2025 Secretary/Treasurer

**Board District 3 - Brian McNulty**

**Board District 4 - Gary McKenna**

**Board District 6 - Pete Burmeister**

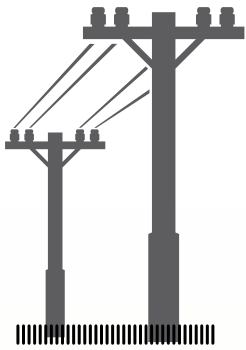
2024/2025 Assistant Secretary/Treasurer

**Board District 8 - Nick Donlea**

**Board District 9 - Steve Rau**

2024/2025 President

**Board District 10 - Gary Cook**



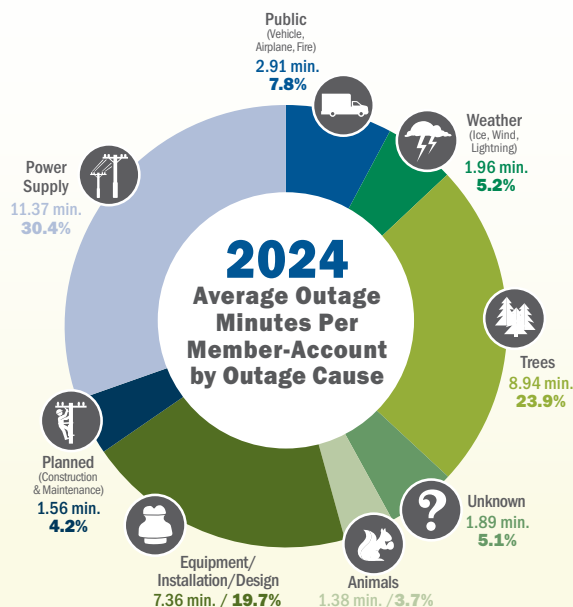
**2,301**  
miles

of overhead and  
underground line  
maintained

**Members  
Support  
Renewable  
Energy Production  
in Iowa**



**65 members**  
**\$2,954.70 total**



## CLASSIFIEDS: Free to members only

Please email your ad to [classifieds@ecirec.coop](mailto:classifieds@ecirec.coop). Ads for the July/August 2025 *Heartland Link* must be received by June 1, 2025.

East-Central Iowa REC will publish non-commercial advertisements as a service to our members. All ads are free. They may be submitted by any member or employee of East-Central Iowa REC. Ads should contain a phone number, name (if desired), a brief description of items with price if applicable. Each ad is limited to maximum of 50 words; please type or print clearly. Editor reserves the right to edit or reject any ad. No ads will be taken over the telephone—please email, mail, or bring your ad to the office.

Heartland Link (USPS No. 313-160) is published bimonthly for \$3.30 per year by East-Central Iowa Rural Electric Cooperative, 2400 Bing Miller Ln., Urbana, IA 52345-0248 with outposts located at 1707 First St. E., Independence, IA 50644 and 1600 West D. St., Vinton, IA 52349. Periodicals class postage paid at Independence, IA, and additional mailing offices.

POSTMASTER: Send address changes to Heartland Link, 2400 Bing Miller Lane, PO Box 248, Urbana, IA 52345.

Phone: 319-443-4343

Ownership: East-Central Iowa Rural Electric Cooperative

Publisher: Teresa Floyd

Editor: Lisa Franck

East-Central Iowa Rural Electric Cooperative is an equal opportunity provider, employer, and lender.

CLIP AND MAIL

See page 2 for the Member Challenge questions.

Answers: 1. \_\_\_\_\_ 2. \_\_\_\_\_ 3. \_\_\_\_\_

Please note: NO ANSWERS will be taken over the phone.

## Find tools for members at [www.ecirec.coop](http://www.ecirec.coop)



### 24-Hour Bill Pay With SmartHub

See account information at [ecirec.coop](http://ecirec.coop) or download the app.



### Outage Center & Map

View current outages via SmartHub or at [outages.ecirec.coop:81](http://outages.ecirec.coop:81).



### Online Forms

Access rebate, service request, and program sign-up forms.



### Call Before You Dig

Notify utilities before you dig at [www.iowaonecall.com](http://www.iowaonecall.com) or call 811.



### Co-op Connections®

Get discounts on everyday expenses. Visit [www.connections.coop](http://www.connections.coop) or download the mobile app.



### Heartland Link E-Newsletter

Email [ecirec@ecirec.coop](mailto:ecirec@ecirec.coop) and ask to receive our newsletter via email.



### Iowa Rural Power

Join grassroots advocates for Iowa's electric cooperatives. Visit [www.iaruralpower.org](http://www.iaruralpower.org).

## Virtual Annual Meeting of the Members

### How Do I Attend?

Visit [ecirec.coop](http://ecirec.coop) and look for the yellow button at the top of the home page, which will take you to the Annual Meeting of the Members page. Look for the green JOIN NOW button. The virtual meeting room will open at 10:30 a.m.

### How Do I Vote?

Ballots will be mailed mid-May and online voting will open May 23. All votes—online and mail-in—MUST be received by June 23.

- 1 MAIL** - A ballot will be mailed to every member with a self-addressed and stamped return envelope.\*
- 2 SMART HUB** - Log in to SmartHub at [ecirec.smarthub.coop](http://ecirec.smarthub.coop) and click VOTE NOW. Please note: SmartHub voting must be done in a web browser, not the SmartHub mobile app.
- 3 ONLINE** - Click the VOTE NOW button located on the home page at [ecirec.coop](http://ecirec.coop). Enter your voter number and election passcode, which will be listed at the bottom of your mailed ballot. Follow online voting instructions.

## SCHEDULE

Wednesday, June 25, 2025

10:30 a.m. - Login opens

11:00 a.m. - Business meeting begins

## AGENDA

Call to Order

Invocation

Introduction of Directors

Steve Rau, President

Reading of Affidavit of Mailing of

Notice of Annual Meeting

Julie Kester, Secretary/Treasurer

Approval of Agenda

Julie Kester, Secretary/Treasurer

Minutes of Last Annual Meeting

Julie Kester, Secretary/Treasurer

Introduction of Attorney

Steve Rau, President

Reading of the Nominating

Committee Minutes and Election Results

Amanda James, Attorney

Adjournment of Business Meeting

## Are There Prizes?

Of course! Twelve \$50 bill credits and two \$100 bill credits will be given away as grand prizes this year.

\*ECI REC partnered with Survey & Ballot Systems to administer the 2025 Annual Meeting mailing and ballot validation processes. They will tabulate all the ballots, both paper and online.