



**MEMBER  
SMART  
CORNER**

## Smart Meter Installation Update

Installation of approximately 1,100 smart meters on 882 member-accounts in the Lindahl and Shellsburg substation areas should be wrapped up by late April. The next batch of postcards notifying members of upcoming installations will drop in mid-to-late April in the Karr and BECCA substation areas.

**REMEMBER** to please keep your meter area(s) clear and accessible so Chapman Metering technicians can easily access it.

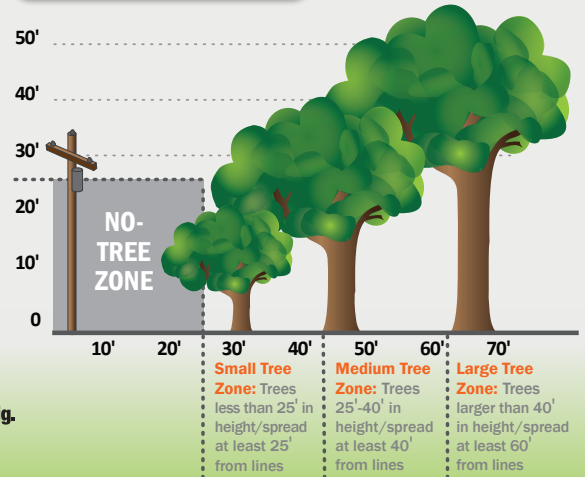
The ECI REC team is here to address any questions you may have about the new meters. Please feel free to call 877-850-4343 or email [ecirec@ecirec.coop](mailto:ecirec@ecirec.coop) if you have any questions.

Iowa celebrates Arbor Day on Friday, April 27! Visit [www.arborday.org](http://www.arborday.org).

**If you're planning to plant trees this spring, help ensure your tree doesn't get an unwanted haircut down the road.**

- » Obey the no-tree zone: Don't plant trees within 25 feet of power lines.
- » Choose the spot based on the tree's full-grown height and spread.

### Tree Planting Guide



**Know what's below.  
Call before you dig.**

## APRIL IS SAFE DIGGING MONTH!

Spring is near, and you may be planning outdoor projects. Whether it's a deck addition, planting a tree, trenching in fields, or a landscaping masterpiece, remember to call Iowa One Call by dialing 8-1-1 before you dig. Although light gardening typically doesn't call for deep digging, other seemingly simple tasks like planting shrubs or installing a new mailbox post can damage utility lines. A severed line can disrupt service to an entire neighborhood, harm the person digging, and potentially result in fines and repair costs.

## HERE FOR YOU, 24/7, 365 DAYS A YEAR

NATIONAL LINEMAN APPRECIATION DAY IS  
APRIL 18, 2018



Visit [facebook.com/eastcentraliowarec](https://facebook.com/eastcentraliowarec) and use [#thankalineman](https://twitter.com/thankalineman) to show your appreciation for a job well done!

# PLEASE JOIN US FOR AN OPEN HOUSE



## NEW Independence Operations Center

1707 1st Street East  
 Wednesday, April 25<sup>th</sup>  
 3:00 p.m. to 7:00 p.m.

*Coffee, pop, water, and cookies will be available.*

## SUPPORT RENEWABLES IN IOWA

You can volunteer to support the development of renewable energy production facilities in Iowa via your monthly bill. In 2017, an average of 89 ECI REC members contributed an average of \$3.94/month each to support the production of renewable energy in Iowa. Member support for the year totaled \$4,212.60.

- Cost is \$2.10 for each 100 kWh. Purchase only 100 kWh or any multiple of 100 kWh.
- All voluntary contributions from members to this fund will be used for the development of alternative energy production facilities in Iowa. Alternative energy production facilities may include wind energy, biomass, solar, and other nontraditional generation technologies.
- Once you have signed up, your participation continues until you notify us that you wish to make a change.

### IOWA RENEWABLE CONTRIBUTION PROGRAM

Name: \_\_\_\_\_  
 ECI REC Account #: \_\_\_\_\_  
 Email: \_\_\_\_\_  
 Daytime phone #: \_\_\_\_\_  
 Signature: \_\_\_\_\_  
 Date: \_\_\_\_\_

I wish to support the purchase of:

- 100 kWh for an extra \$2.10 per month
- 200 kWh for an extra \$4.20 per month
- 300 kWh for an extra \$6.30 per month
- \_\_\_\_\_ kWh at \$2.10 per 100 kWh per month

Please return to: East-Central Iowa REC  
 PO Box 248 | Urbana, Iowa 52345



## ATTENTION MEMBERS: Use Caution When Burning Ditches This Spring

Burning helps clean things up, but it can also cause extensive damage to Cooperative property, resulting in electric service problems. Members involved in such fires may be invoiced for damage they cause to Cooperative property.

### TWO TIPS FOR SAFE BURNING

- 1 Green, or newer, poles are more susceptible to burning—use extra caution.
- 2 Always be aware of the locations of poles, anchor guy assemblies, underground cabinets, and other important Cooperative equipment when burning.

## MEMBERSHIP BENEFITS



Your Co-op Connections® Card offers you Healthy Savings and local and national deals. Use your card to start saving today! Questions? Email [coopconnections@ecirec.coop](mailto:coopconnections@ecirec.coop).



Use SmartHub to pay for FREE online! Discover, Visa, and MasterCard accepted. While you're there, view your monthly usage data in helpful chart formats.



Click the Energy Resource Center icon at [ecirec.coop](http://ecirec.coop) to get electronics advice, access reference tools, and break down your monthly energy costs via a home energy advisor.